

Butt connector sets automatic Type I

Item description/product images



Description

Material:

Steel.

Version:

Electro zinc-plated.

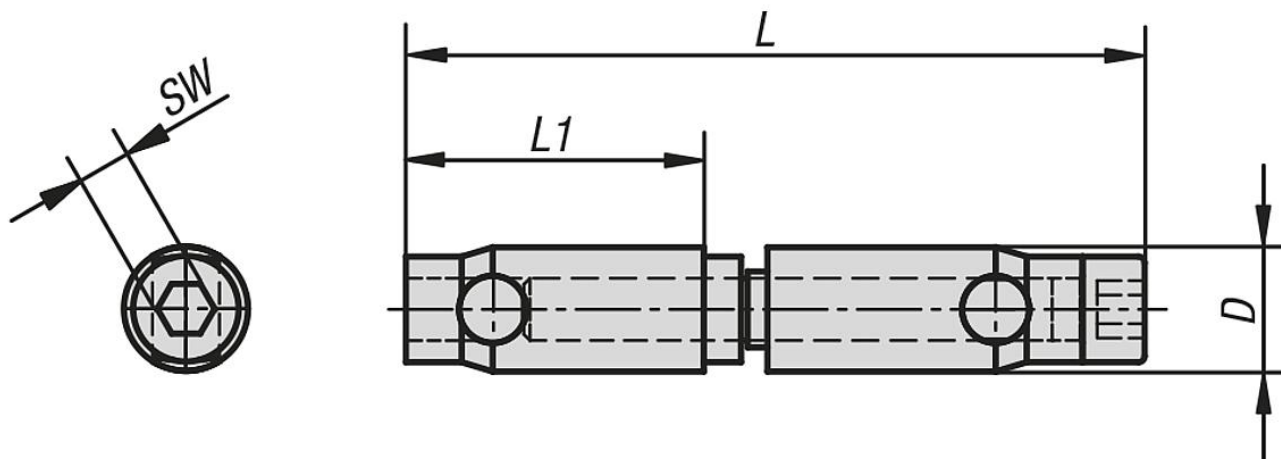
Note:

The connecting sets are used to connect two aluminum profiles of the same series from the front.

No machining of the profile is necessary. The connector is screwed into the profile slot from the front (connector with through hole left-hand thread. Connector with internal thread right-hand thread). The connector has a self-tapping thread. The use of lubricants is recommended.

Automatic connecting sets should always be used in pairs. More pairs are required for large profiles and loads.

Drawings



Overview of items

Butt connector sets, automatic, Type I

Order No.	Type	Slot width	D	L	L1	SW
K1041.06	I	6	10	60	24	4
K1041.08	I	8	12	69	27	5

