

Pull handles, plastic, fold-down

Item description/product images



Description

Material:

Frame and grip glass-bead reinforced thermoplastic.
Linkpins and return springs stainless steel.

Version:

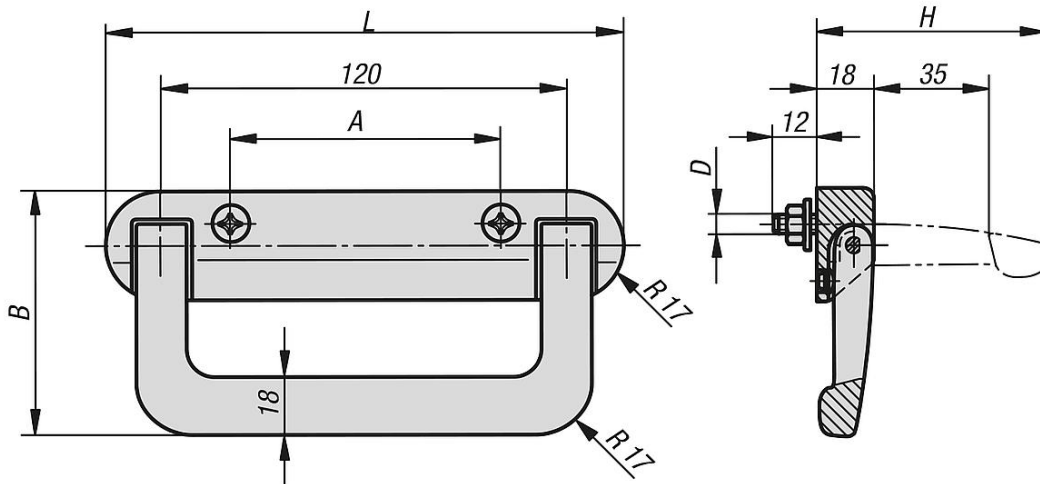
matt black.

Note:

The fold-down handle automatically returns to rest. Can be screwed onto a housing panel.

Black electro zinc-plated DIN 965 countersunk M6x30 screws with cross slit, washers and nuts are supplied.

Drawings



Overview of items

Pull handles fold-down

Order No.	A	B	D	H	L	Load capacity N
K0241.080181	80	77	M6	71	154	300