

Tubular handles, carbon with stainless steel grip legs

Item description/product images



Description

Material:

Grip legs stainless steel 1.4308.

Tubular grip carbon fibre reinforced plastic (CFP).

Version:

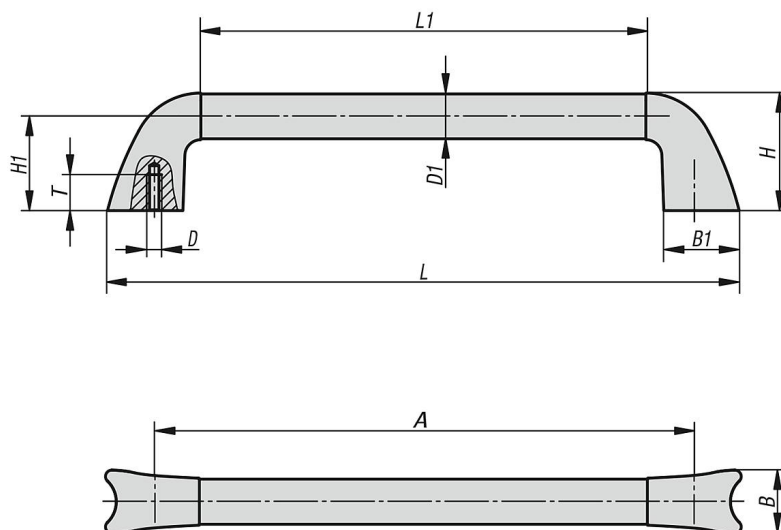
Grip legs polished.

Tubular grip CFP composition, clear varnished.

Note:

The grip is fastened using stainless steel DIN EN ISO 4762 socket head screws.

Drawings



Overview of items

Tubular handles carbon

Order No.	A	B	B1	D	D1	H	H1	L	L1	T	Load capacity N
K0781.250251	250	34,8	41,6	M6	25	64	51	301	198	20	1000
K0781.300251	300	34,8	41,6	M6	25	64	51	351	248	20	1000
K0781.350251	350	34,8	41,6	M6	25	64	51	401	298	20	1000
K0781.350351	350	47,7	55	M6	35	84	66	424	286	20	1000
K0781.400351	400	47,7	55	M6	35	84	66	474	336	20	1000
K0781.450351	450	47,7	55	M6	35	84	66	524	386	20	1000