

Weldable hinges, Form A

Item description/product images



Description

Material:

Hinge steel.
Spacer washer brass.
Hinge pin steel or brass.

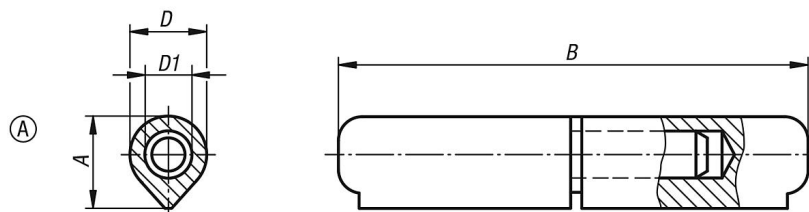
Version:

Steel parts bright.

Note:

The hinges are made of weldable profile steel.
The pin is fixed into the lower part of the hinge.
The differing steel qualities of the weld and the beam onto which the hinge is welded must be at least equal to or better than:
S235 JR+AR acc. to EN 10025-2:2004-10
DIN 8563 part 3 or Fe E 235 acc. to SIA 161

Drawings



Overview of items

Order No.	Form	Component material	A	B	D	D1
K0984.008040012	A	steel	9,7	40	8	5
K0984.008050012	A	steel	9,7	50	8	5
K0984.010060012	A	steel	12,7	60	10	6
K0984.010070012	A	steel	12	70	10	6
K0984.013080012	A	steel	15,5	80	13	8
K0984.016100012	A	steel	20	100	16	10
K0984.016120012	A	steel	20	120	16	11
K0984.018135012	A	steel	22	135	18	12
K0984.020150012	A	steel	25	150	20	13
K0984.020180012	A	steel	25	180	20	14
K0984.023200012	A	steel	28,5	200	23	16
K0984.008040022	A	brass	9,7	40	8	5
K0984.008050022	A	brass	9,7	50	8	5
K0984.010060022	A	brass	12,7	60	10	6
K0984.010070022	A	brass	12	70	10	6
K0984.013080022	A	brass	15,5	80	13	8
K0984.016100022	A	brass	20	100	16	10
K0984.016120022	A	brass	20	120	16	11
K0984.018135022	A	brass	22	135	18	12

Weldable hinges, Form A

Overview of items

Order No.	Form	Component material	A	B	D	D1
K0984.020150022	A	brass	25	150	20	13
K0984.020180022	A	brass	25	180	20	14
K0984.023200022	A	brass	28,5	200	23	16