

## Catch plates steel or brass for barrel locks with return spring

### Item description/product images



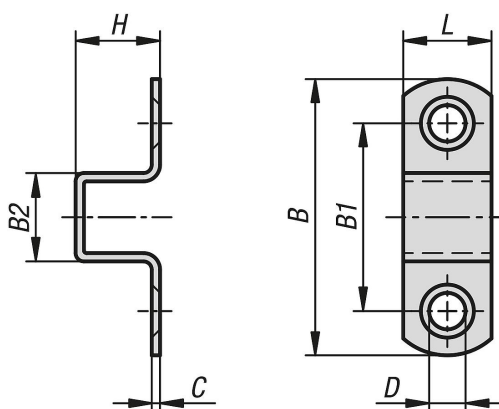
### Description

**Material:**  
Steel or brass.

**Version:**  
Steel zinc-plated.  
Brass chromed.

**Note:**  
The catch plates can be simply screwed onto the application.

### Drawings



### Overview of items

#### Catch plates steel or brass, for lock grip with return spring

Order No.	Main material	Surface finish body	B	B1	B2	C	D	H	L
K1669.11350	steel	passivated	35	23	11,5	1,2	3,5	11,5	11
K1669.16500	steel	passivated	50	34	16	1,5	4,8	16	16
K1669.22680	steel	passivated	68,5	43,5	21	2	7	21	22
K1669.11351	brass	chromed	35	23	11,5	1,2	3,5	11,5	11
K1669.16501	brass	chromed	50	34	16	1,5	4,8	16	16
K1669.22651	brass	chromed	68,5	43,5	21	2	7	21	22