

**Description****Material:**

Housing, steel plate.

Wheel tyre, high-quality elastic solid rubber.

Wheel rim, high-quality unbreakable polyamide or die-cast aluminium.

Version:

Housing, press-formed.

Swivel housing, double-row ball bearings in a swivel head.

Ball bearing wheel axle bearings.

Note:

Wheel axle bolted.

Swivel and fixed castors with mounting plate.

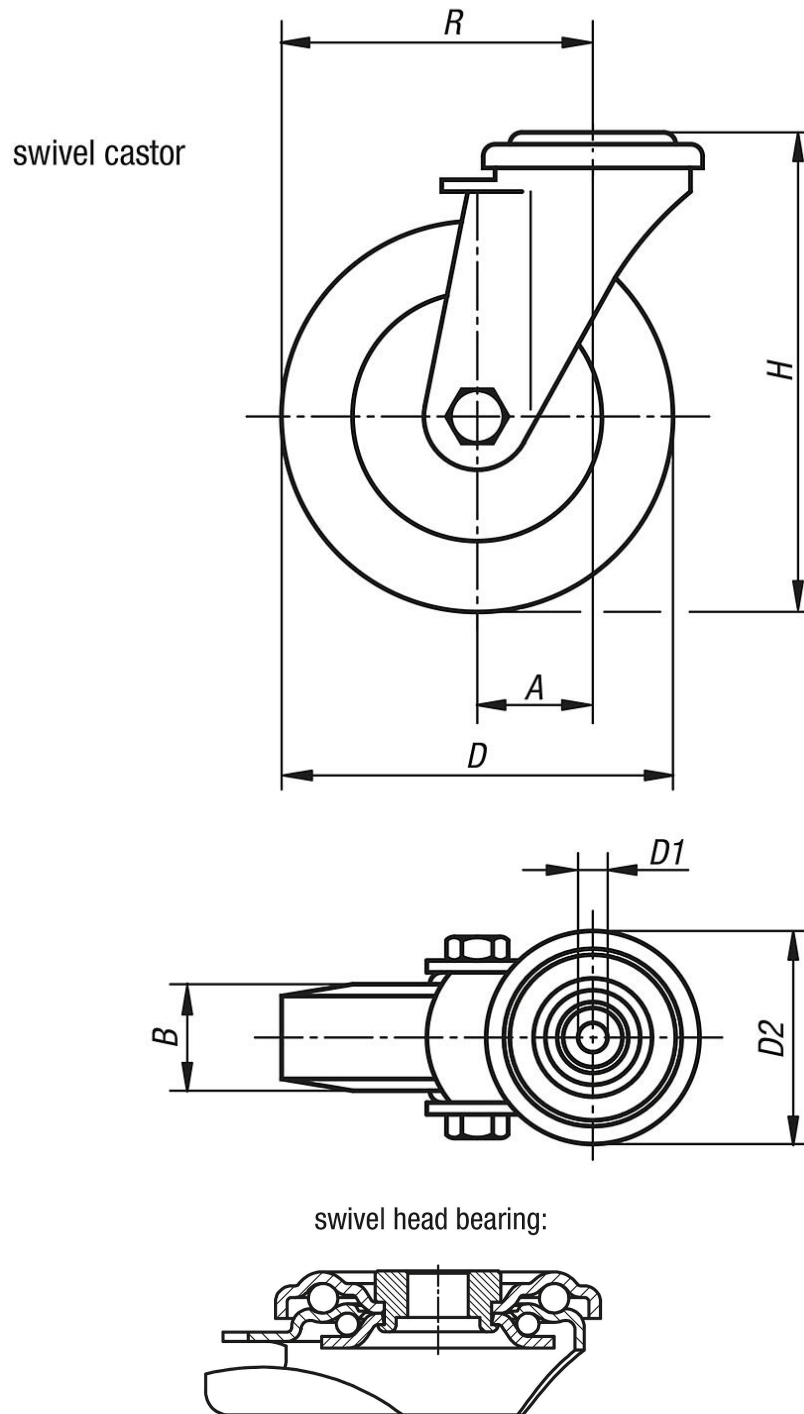
Application:

Maximum travel comfort, excellent cushioning of the transported goods. The new soft rubber series brings noticeable noise reduction in all applications.

Temperature range:

-25 °C to +80 °C.

Drawings



Overview of items

Order No.	Item	Wheel bearing	A	B	D	D1	D2	H	R	Permissible load kg
K1789.10100040	Swivel castor	ball bearing	36	40	100	13	70	125	86	150
K1789.10125040	Swivel castor	ball bearing	40	40	125	13	70	150	102,5	150

