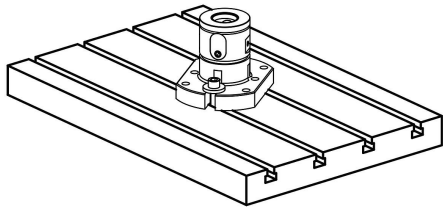
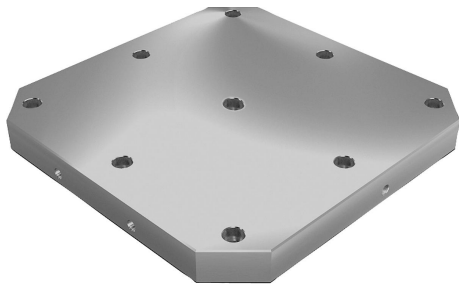


Subplates, grey cast iron with pre-machined clamping faces

Item description/product images



Description

Material:
GJL 300.

Version:
Support and mounting surfaces ground

Note:

Subplates with pre-machined clamping faces provide a quick and economic way of producing bodies with specific grid or individual holes. The subplates conform to machine tables for machine tools acc. to DIN 55201 and JIS 6337-1980.

Please order locating pins for positioning subplates on machine tables acc. to DIN 55201 separately.

Ring bolts for hoisting are supplied.

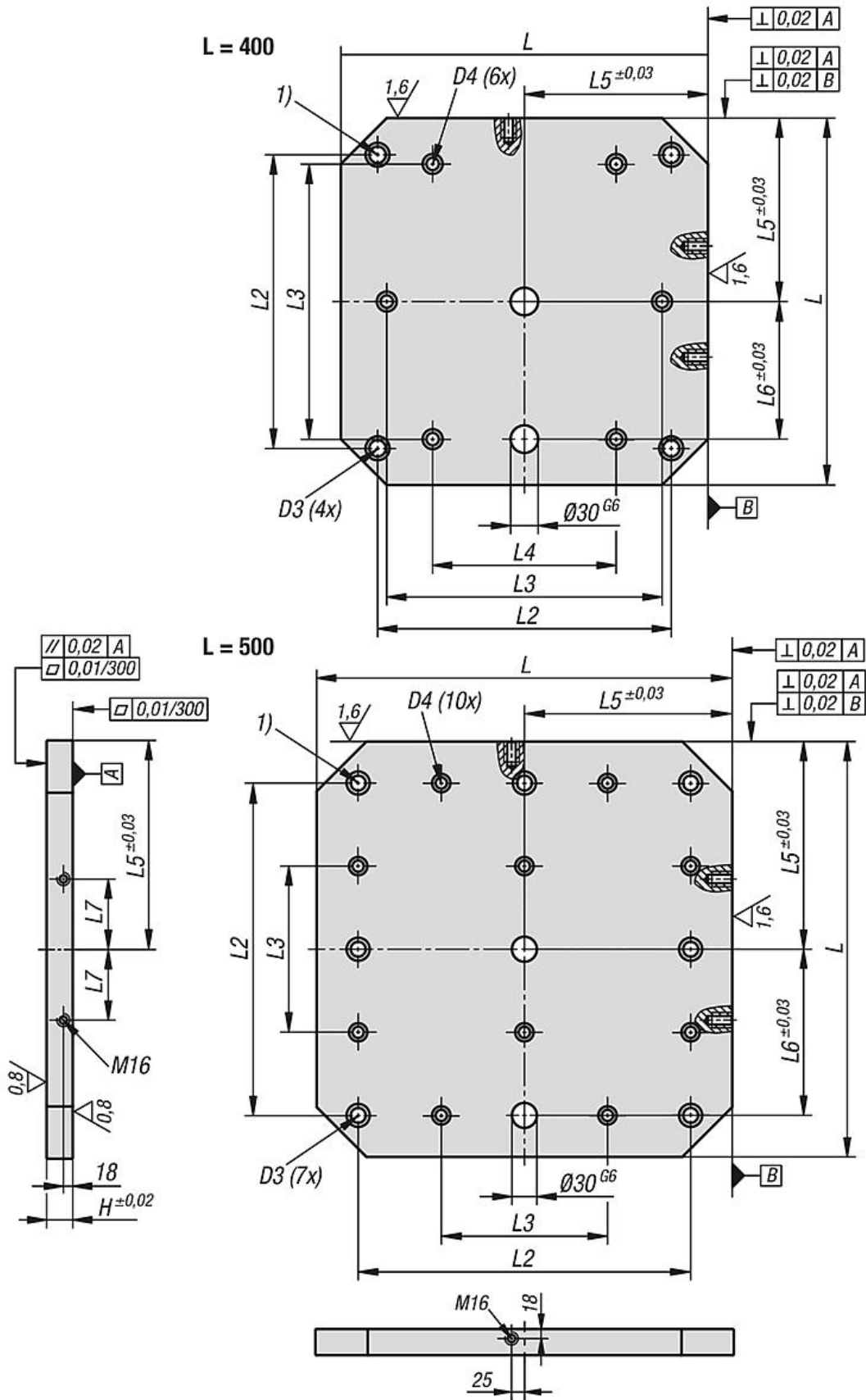
Other dimensions available on request.

Drawing reference:

1) hole for DIN 912 cap screw (D3/D4)

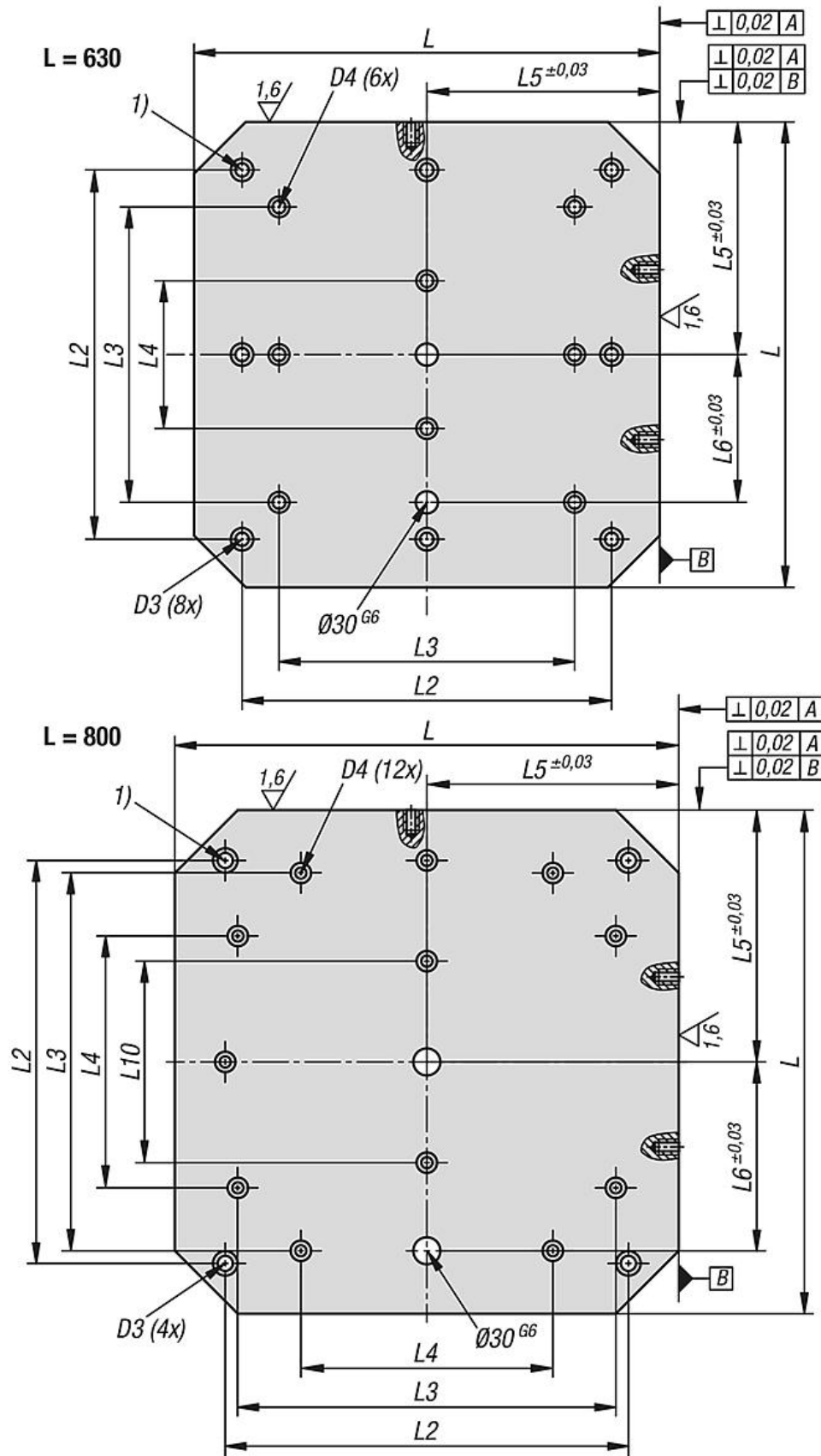
Subplates, grey cast iron with pre-machined clamping faces

Drawings



Subplates, grey cast iron with pre-machined clamping faces

Drawings



Subplates, grey cast iron with pre-machined clamping faces

Overview of items

Subplates, grey cast iron with pre-machined clamping faces

Order No.	L	H	D3	D4	L2	L3	L4	L5	L6	L7	L10
K0806.1004040	400	50	M16	M12	320	300	200	200	150	55	-
K0806.1005050	500	50	M16	M12	400	200	-	250	200	75	-
K0806.1006363	630	50	M16	M16	500	400	200	315	200	100	-
K0806.1008080	800	50	M16	M16	640	600	400	400	300	135	320