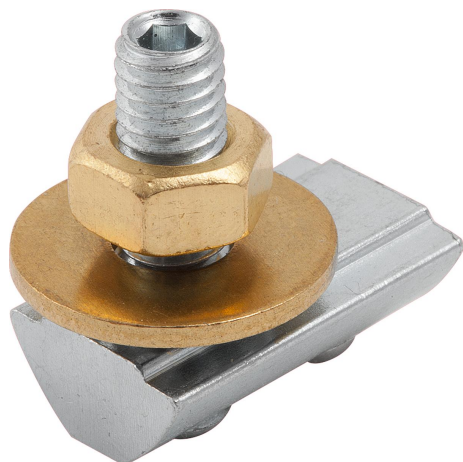


Earthing terminal type I

Item description/product images



Description

Material:

Slot key, grub screw and serrated washer, steel.
Nut and washer, brass.

Version:

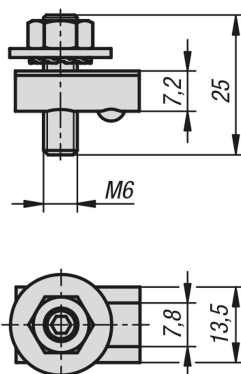
Slot key, grub screw and serrated washer, electro zinc-plated.

Note:

For protecting installations and persons. Connectors for earthing aluminium profile structures and interconnecting the aluminium profiles by integrating them into the protective earth (PE) system. Conductive contact is established through defined destruction of the oxide layer in the slot base and on the slot flanks.

The cable lug must be positioned between the serrated washer and the washer during assembly.

Drawings



Overview of items

Earthing terminal type I

Order No.	Version 2	Slot width
K1282.0806	type I	8