

R-clips similar to DIN 11024

Item description/product images



Description

Material:

Steel or stainless steel A2.

Version:

Steel electro zinc-plated.

Stainless steel bright.

Note:

R-clips are used for securing bolts and axles. They are easy to install and can be reused. The ends have no sharp edges.

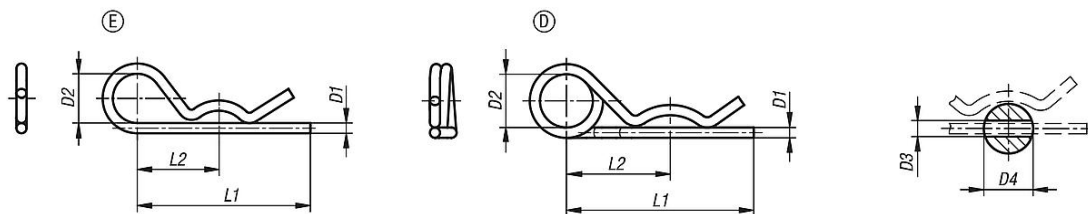
Double coil R-clips have a flatter spring characteristics and are easier to install. The double coil allows a tether cable to be attached to prevent loss.

Drawing reference:

Form E: with single coil.

Form D: with double coil (coil direction can differ from the drawing).

Drawings



Overview of items

R-clips similar to DIN 11024

Order No.	Main material	Form	D1	D2	D3	D4=for screw Ø	L1	L2
K1137.11200	steel	E	2	10	2,5	9-14	50	25
K1137.11300	steel	E	3	18	3,5	10-16	60	28
K1137.11400	steel	E	4	20	4,5	16-20	60	30
K1137.11500	steel	E	5	24	6	20-28	85	40
K1137.11600	steel	E	6	30	7	28-40	105	50
K1137.11700	steel	E	7	30	8	28-45	105	50
K1137.21200	stainless steel A2	E	2	10	2,5	7-8	40	25
K1137.21250	stainless steel A2	E	2,5	11	3	10-16	46	24
K1137.21300	stainless steel A2	E	3	16	3,5	16-18	60	34
K1137.21400	stainless steel A2	E	4	19	4,5	18-20	64	36
K1137.21500	stainless steel A2	E	5	26	6	20-28	82	45
K1137.21600	stainless steel A2	E	6	30	7	28-40	110	60
K1137.12225	steel	D	2,25	20	2,5	9-11,2	42	24
K1137.12280	steel	D	2,8	20	3,2	11,2-14	48	26
K1137.12360	steel	D	3,6	20	4	14-20	64	32
K1137.12450	steel	D	4,5	25	5	20-26	80	39
K1137.12560	steel	D	5,6	25	6,3	26-34	97	45
K1137.12630	steel	D	6,3	30	7	34-45	125	56
K1137.12700	steel	D	7	30	8	45-56	150	63
K1137.22225	stainless steel A2	D	2,25	20	2,5	7-9	42	24
K1137.22280	stainless steel A2	D	2,8	20	3,2	11-14	48	26
K1137.22360	stainless steel A2	D	3,6	20	4	14-20	64	32

R-clips similar to DIN 11024

Overview of items

Order No.	Main material	Form	D1	D2	D3	D4=for screw \emptyset	L1	L2
K1137.22450	stainless steel A2	D	4,5	25	5	20-26	80	39
K1137.22560	stainless steel A2	D	5,6	25	6,3	26-34	97	45