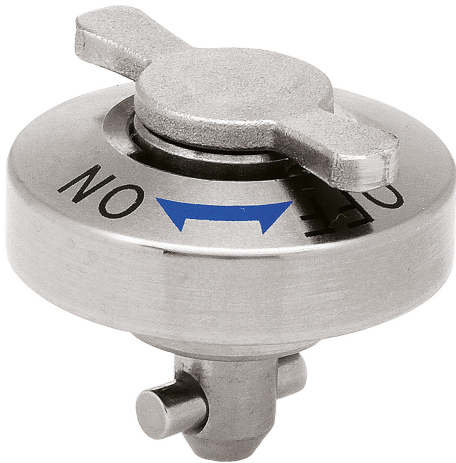


Quarter-turn clamp locks flat stainless steel

Item description/product images



Description

Material:

Housing steel.
Pin stainless steel.
Knob stainless steel.

Version:

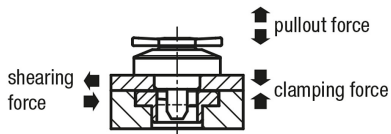
Housing nickel-plated.
Pin bright.
Knob stainless steel, bright.

Note:

M2 or M3 mounting screws are supplied.
Form A mounting option for plate thickness 6 or 12 mm.
Form B mounting option for plate thickness 12 to 20 mm.

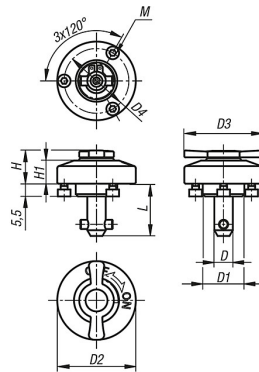
Accessory:

Clamping plates K1062



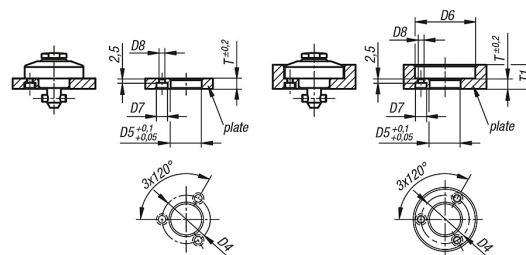
Quarter-turn clamp locks flat stainless steel

Drawings



Form A mounting option

Form B mounting option



Overview of items

Order No.	D	D1	D2	D3	D4	H	H1	L	M	D5	D6	D7	D8	T	T1	Clamping force N	Shearing force kN	Pullout force kN	Temperature resistance up to
K1061.5162	5	14	25	20	21	11,5	6,5	15,5	M2 3-tief	14	26	4,4	2,4	6	6-10	60	1,8	1,2	200 °C
K1061.8172	8	18	34	32	28	15,4	10	17	M3 4-tief	18	35	6,5	3,4	6	6-14	90	3,2	2,6	200 °C
K1061.8232	8	18	34	32	28	15,4	10	23	M3 4-tief	18	35	6,5	3,4	12	12-20	90	3,2	2,6	200 °C