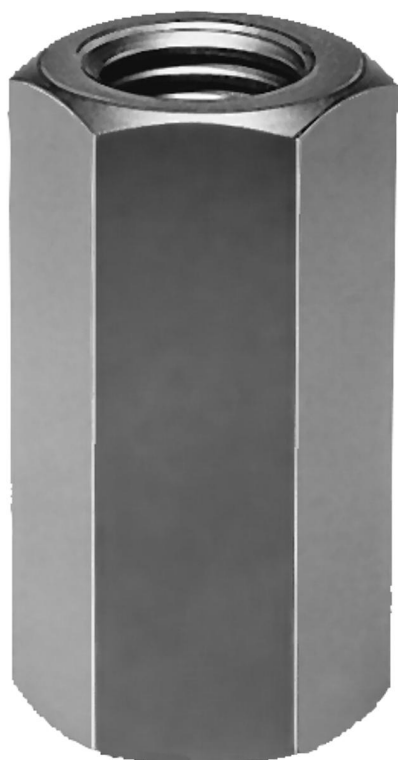


## Extension nuts height 3xD

### Item description/product images



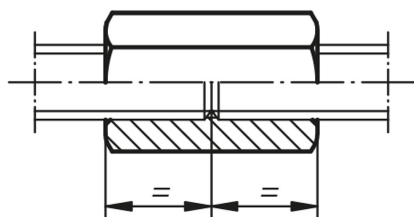
### Description

**Material:**  
Carbon steel.

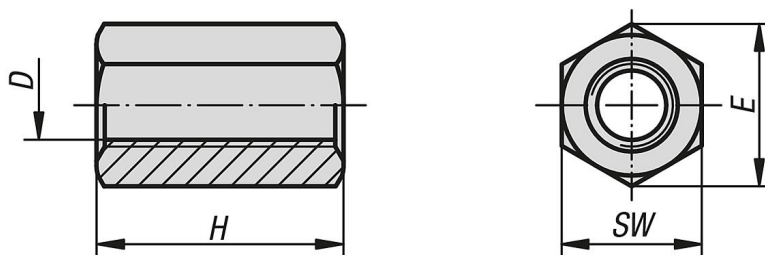
**Version:**  
Steel grade 10, black oxidised.

**Note:**  
For functional and safety reasons screws should be screwed into a maximum of half the nut height from both sides. Minimum thread depth 1x diameter.

**On request:**  
DIN ISO 272 spanner sizes.



### Drawings



### Overview of items

#### Extension nuts height 3xD

Order No.	D	H = 3 x D	SW	E
K0865.06	M6	18	10	11,5
K0865.08	M8	24	13	15
K0865.10	M10	30	17	19,6
K0865.12	M12	36	19	21,9

**Extension nuts height 3xD****Overview of items**

Order No.	D	H = 3 x D	SW	E
K0865.16	M16	48	24	27,7
K0865.20	M20	60	30	34,6