

Levelling feet plates ECO, Form B

Item description/product images



Description

Material:

Plate thermoplastic, die-cast zinc or stainless steel 1.4305.
Anti-slip plate thermoplastic elastomer.

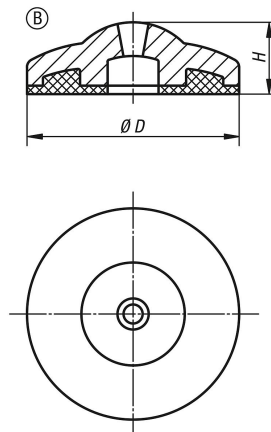
Version:

Thermoplastic plate black.
Die-cast zinc plate blue electro zinc-plated.
Stainless steel plate bright.

Note:

ECO levelling feet consist of a plate and a threaded spindle. Any plate can be combined with any threaded spindle.
The anti-slip plate absorbs vibrations and prevents the levelling foot slipping.
For matching threaded spindles see K0429.

Drawings



Overview of items

Order No.	Form	Main material	D	H	Load rating max. kN
K0428.20301	B	zinc	30	13,5	16
K0428.20401	B	zinc	40	14,5	18
K0428.20501	B	zinc	50	17,5	20
K0428.20302	B	stainless steel	30	13,5	22
K0428.20402	B	stainless steel	40	14,5	24
K0428.20502	B	stainless steel	50	17,5	26
K0428.20303	B	thermoplastic	30	13,5	15
K0428.20403	B	thermoplastic	40	14,5	15
K0428.20503	B	thermoplastic	50	17,5	15