

Magnets deep pot with pin AlNiCo

Item description/product images



Description

Material:

Housing, steel.
Magnetic core AlNiCo.

Version:

Housing, electro zinc-plated.

Note:

Deep pot magnets with smooth pin, shielded system.
The magnets can be shortened by the dimension "H1" with no loss of magnetic force.

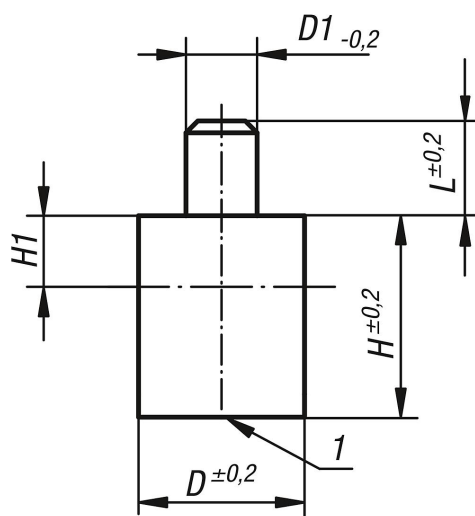
Temperature range:

max. 450°C.

Drawing reference:

1) magnetic face

Drawings



Overview of items

Magnets deep pot with pin AlNiCo

Order No.	D	D1	L	H	H1	Magnetic force N
K0547.01	6	3	8	20	2	1,7
K0547.02	8	3	8	20	3	4
K0547.03	10	4	8	20	6	8,5
K0547.04	13	4	8	20	7	12
K0547.05	16	5	8	20	5	20
K0547.06	20	6	8	25	6	50
K0547.07	25	8	10	35	5	115
K0547.08	32	10	10	40	3	200
K0547.09	40	15	20	50	5	240

Magnets deep pot with pin AlNiCo

Overview of items

Order No.	D	D1	L	H	H1	Magnetic force N
K0547.10	50	18	25	60	2	420