

## Levelling feet plates, plastic, Form C

### Item description/product images



### Description

**Material:**

Plates, thermoplastic, glass-fibre reinforced.

**Version:**

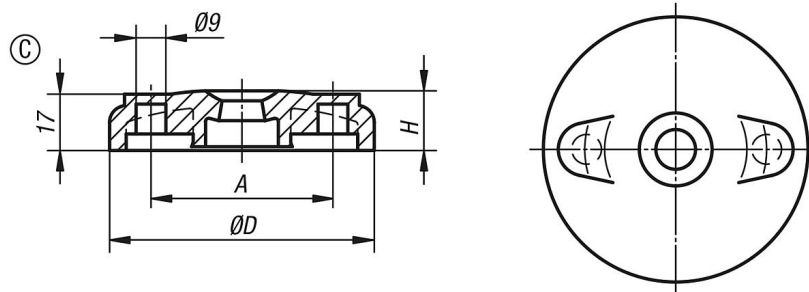
Black.

**Note:**

Levelling feet consist of a plate and a threaded spindle. Any plate can be combined with any threaded spindle.

For matching threaded spindles, see K0427.

### Drawings



### Overview of items

Order No.	Form	D	A	H	Load rating max. kN
K0423.3080	C	80	55	18	12
K0423.3100	C	100	74	18	12