

Clamping pins (high force)

Item description/product images



Description

Material:

Carbon steel.

Version:

Pins tempered and ground.

Knurled knob tempered, black oxidised.

Note:

The clamping pin length must be adapted to the workpiece by the customer.

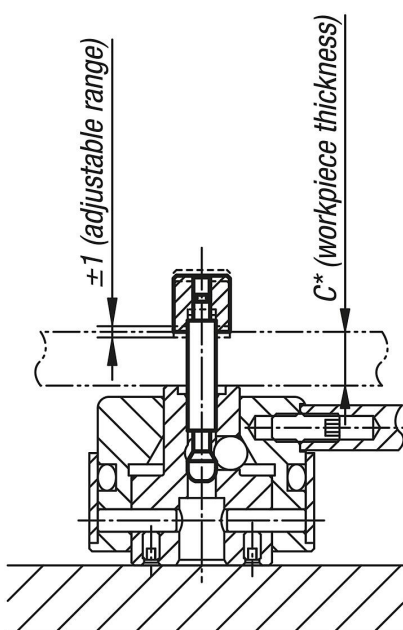
Dimension C defines the length of the clamping pin before machining.

The dimension C must be adapted by the customer to suit the thickness of the workpiece.

Afterwards, a thread with dimension J must be cut into the clamping pin.

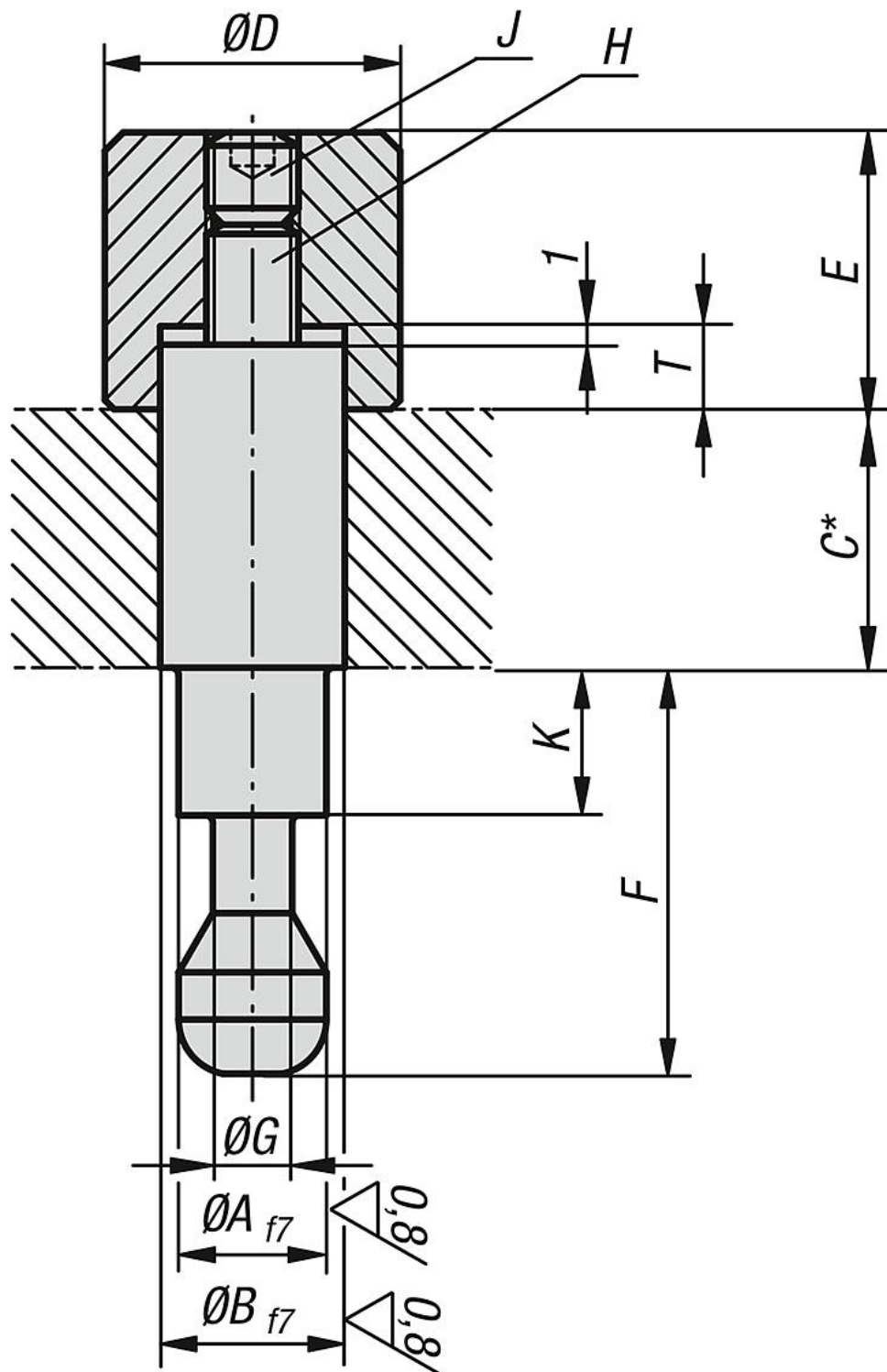
The assembly drawing must be observed to determine the length of the clamping pin.

After machining the clamping pin to the correct overall length, the knurled knob is attached to the clamping pin using the two grub screws and locked.



Clamping pins (high force)

Drawings



Overview of items

Clamping pins (high force)

Clamping pins (high force)

Overview of items

Order No.	A	B	C	D	E	F	G	H	J	K	T	Suitable for
K0911.412100	12	12	100	18	23	38	6,5	M8	M8x8	21,5	7	K0911.506501
K0911.416100	12	16	100	24	23	38	6,5	M8	M8x8	21,5	7	K0911.506501
K0911.516120	16	16	120	24	29	48	9,5	M10	M10x10	28	9	K0911.638001
K0911.520120	16	20	120	30	29	48	9,5	M10	M10x10	28	9	K0911.638001