

## Square tube connectors two-way swivel

### Item description/product images



### Description

#### Material, version:

Polyamide PA, black.

DIN 6912 screws and DIN 934 nuts electro zinc-plated steel.

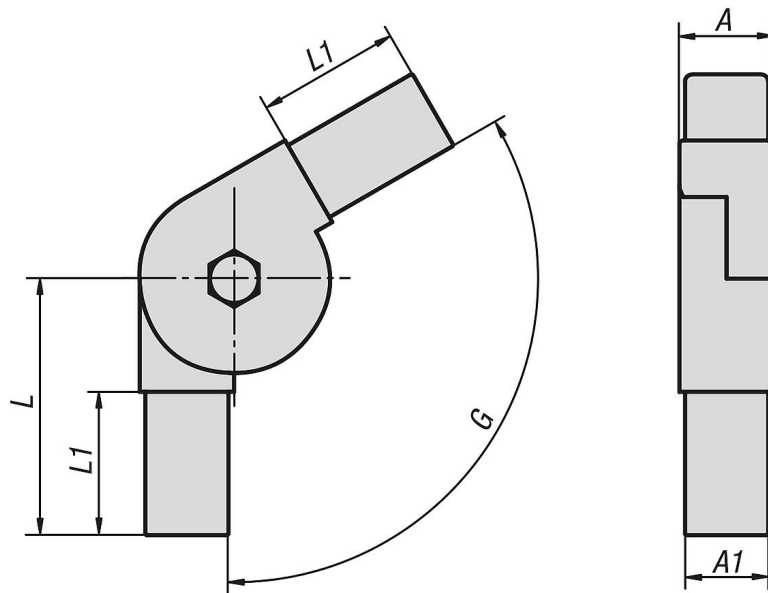
#### Note:

The tube connectors are simply pushed into the appropriate square tubing. They can be dismantled and reused repeatedly. The swivel angle can be seamlessly adjusted.

#### Accessory:

- Square tubes K0627
- Finned square tubes K0628

### Drawings



### Overview of items

#### Square tube connectors, two-way swivel

Order No.	A	A1	L	L1	G	Suitable for square tubes
K0625.1201511	20	17	59	34	0° - 190°	20 x 20 x 1,5
K0625.1251511	25	22	68	38	0° - 190°	25 x 25 x 1,5
K0625.1251512	25	22	59	38	45° - 195°	25 x 25 x 1,5
K0625.1302011	30	26	75	40	0° - 190°	30 x 30 x 2
K0625.1302012	30	26	68	42	45° - 200°	30 x 30 x 2