

Clamping levers, steel with internal thread, satin finish

Item description/product images



Description

Material:

Handle steel 1.0401.

All other steel parts grade 5.8.

Version:

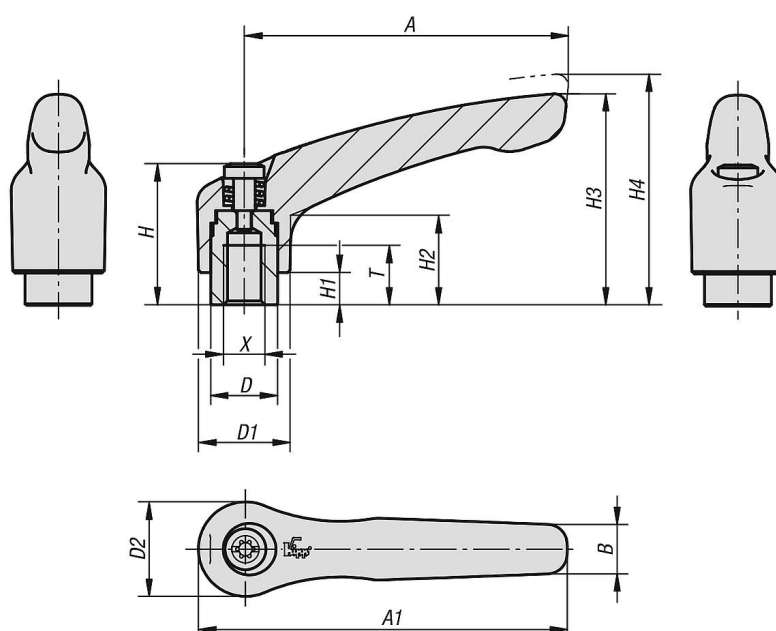
Handle powder-coated.

Steel parts black oxidised.

lift to
disengage



Drawings



Clamping levers, steel with internal thread, satin finish

Overview of items

Order No.	Main colour	Surface finish body	Size	X	T	D	D1	D2	H	H1	H2	H3	H4	A	A1	B	No. of teeth
K0752.1041	jet black RAL 9005	satin finish	1	M4	9	10	13	14	24,5	4	14,5	31	34	40	47	7	16
K0752.1051	jet black RAL 9005	satin finish	1	M5	9	10	13	14	24,5	4	14,5	31	34	40	47	7	16
K0752.1061	jet black RAL 9005	satin finish	1	M6	9	10	13	14	24,5	4	14,5	31	34	40	47	7	16
K0752.2061	jet black RAL 9005	satin finish	2	M6	12	13,5	18,5	19	28,5	6,5	17,5	42,5	45,5	65	74,5	10	20
K0752.2081	jet black RAL 9005	satin finish	2	M8	12	13,5	18,5	19	28,5	6,5	17,5	42,5	45,5	65	74,5	10	20
K0752.3081	jet black RAL 9005	satin finish	3	M8	14	16	21	22	37	10	24	54,5	58,5	80	91	11	22
K0752.3101	jet black RAL 9005	satin finish	3	M10	14	16	21	22	37	10	24	54,5	58,5	80	91	11	22
K0752.4101	jet black RAL 9005	satin finish	4	M10	17	19	27	27,5	43	10	27	63	67,5	95	109	13	24
K0752.4121	jet black RAL 9005	satin finish	4	M12	17	19	27	27,5	43	10	27	63	67,5	95	109	13	24
K0752.5121	jet black RAL 9005	satin finish	5	M12	23	23	31	32	49	12	31,5	73	77,5	110	126	15	26
K0752.5161	jet black RAL 9005	satin finish	5	M16	23	23	31	32	49	12	31,5	73	77,5	110	126	15	26

Information about this article

Description of clamping lever with internal thread: The adjustable grip is made from unalloyed C15 steel (grade 5.8). The highly robust steel grips easily stand up to higher forces during opening and closing. The handy grip on the clamping lever is matt powder-coated and available as standard in red or black. The matt coating ensures effective light absorption without glare. The following clamping lever thread sizes are available ex stock and can be conveniently ordered online: - M5- M6- M8- M10- M12- M16 Clamping levers with external thread are easy to install. Simply screw them into a part that has a corresponding internal thread. Lifting the handle unlocks it from the toothing, allowing it to be moved into the desired tightening position. The handle will automatically lock back into place when released. Using clamping levers with external thread: Clamping levers are predominantly used as an operating part in industrial applications such as machines or industrial plants. However, they can also be found in all other areas where a clamping operation is required i.e. entertainment and lighting technology, logistics systems, and sporting equipment.