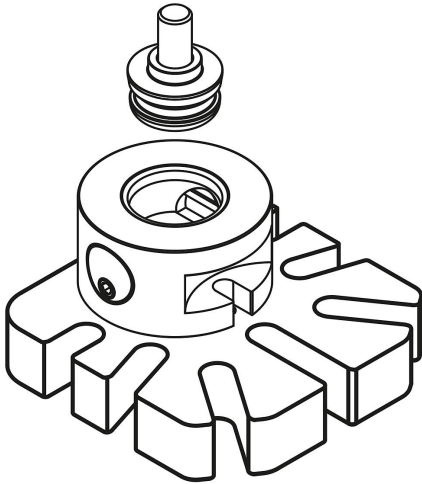
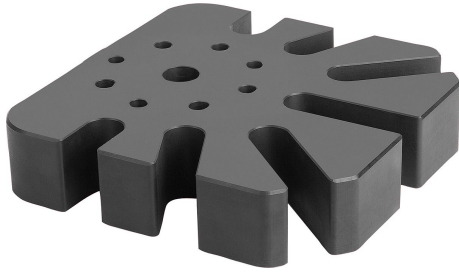


UNILOCK 5-axis baseplate for general clamping, size 138 mm

Item description/product images



Description

Material:

Steel.

Version:

Main body oxidised.

Contact faces hardened and ground.

Note:

The UNILOCK baseplates can be easily mounted on T-slot or grid plate machine tables. Due to their variable designs, these baseplates can be positioned anywhere on the machine table enabling every part of the machine table to be used. Due to their sturdy design, these baseplates are ideal for use as a basic element for large and heavy workpieces.

On request:

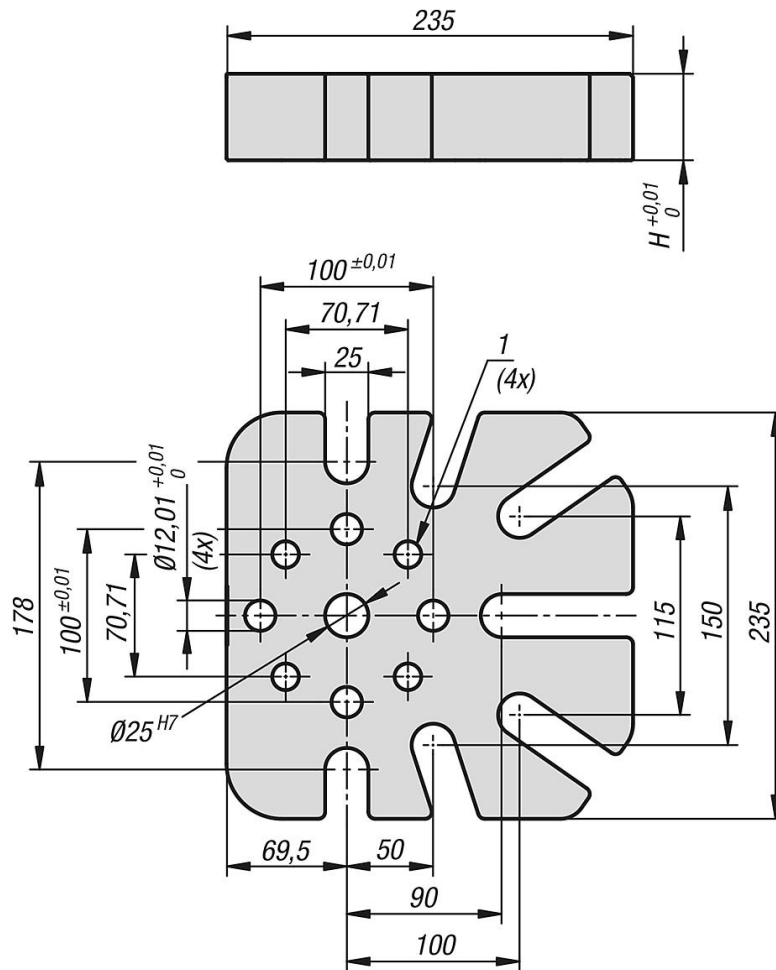
Other versions.

Drawing reference:

1) for DIN 912 M12 cap screw

UNILOCK 5-axis baseplate for general clamping, size 138 mm

Drawings



Overview of items

UNILOCK 5-axis baseplate for general clamping, size 138 mm

| Order No. | H |
|-------------------|----|
| K1420.23523505025 | 50 |