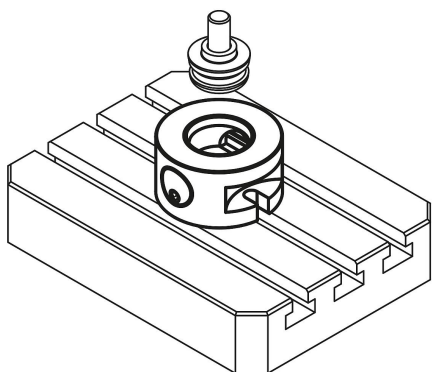
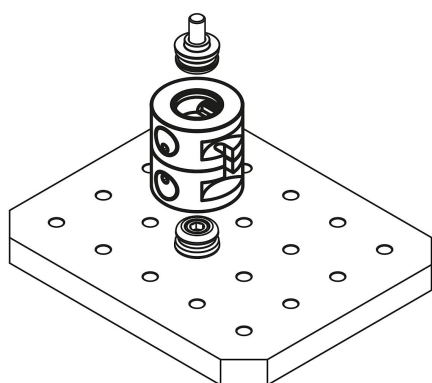
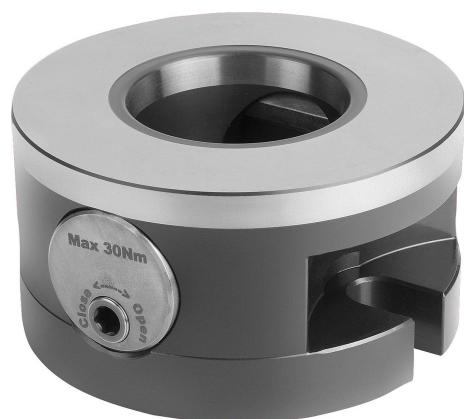


UNILOCK 5-axis basic module system size 138 mm

Item description/product images



Description

Material:

Carbon steel.

Version:

Main body oxidised.

Contact faces hardened and ground.

Note:

The UNILOCK 5-axis basic module with system size 138 is suitable for clamping large and heavy workpieces. The workpiece can be set directly in the basic module using the clamping bolt or reducer adapter. The basic modules are fastened via the corresponding baseplates or directly to the machine table. A flexible positioning is possible. A double clamping module can also be created by placing two modules together, underside to underside.

The following clamping forces are possible with the UNILOCK clamping pin in conjunction with M16, M20, M24 fastening screws:

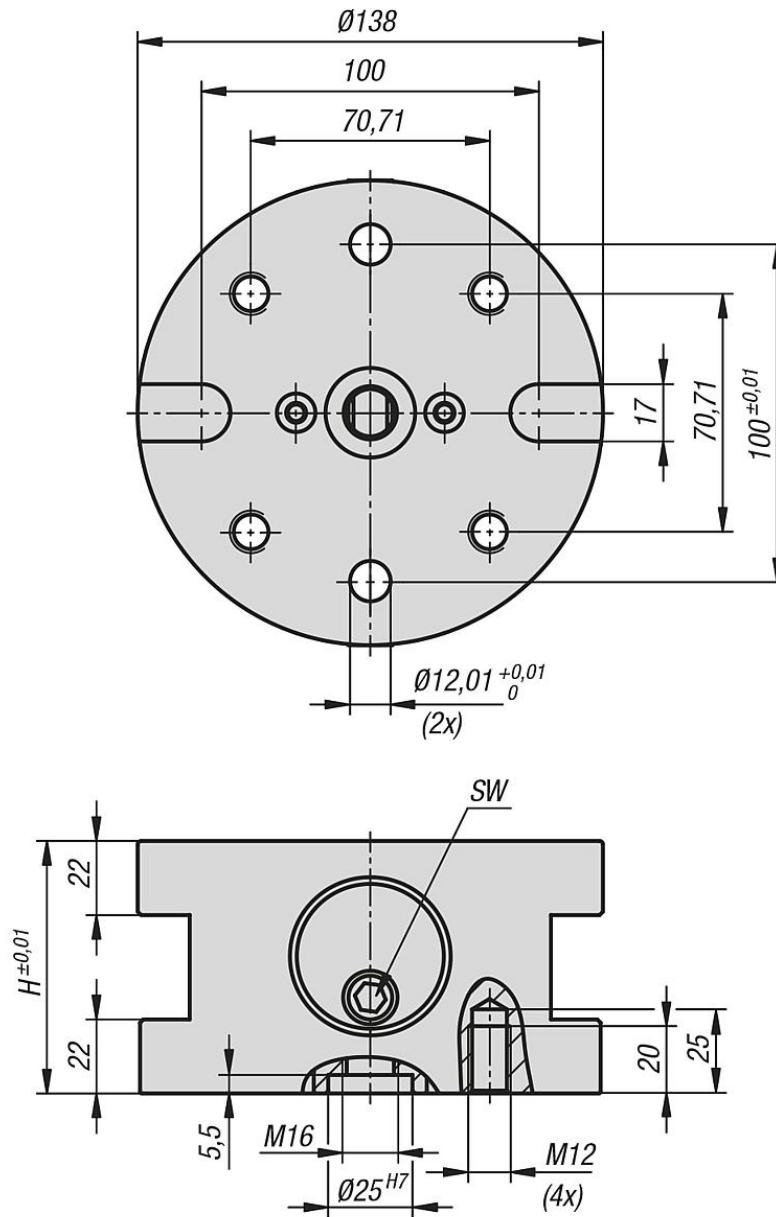
- Clamping force (M16) 75,000 N
- Clamping force (M20) 160,000 N
- Clamping force (M24) 230,000 N

Clamping force with DIN EN ISO 4762 -12.9 cap screws

Clamping pins may only be clamped in conjunction with a mounted interchangeable unit in the clamping module.

UNILOCK 5-axis basic module system size 138 mm

Drawings



Overview of items

UNILOCK 5-axis basic module, system size 138 mm

Order No.	Form	Form definition	H	SW	Tightening torque max. Nm
K1419.1380750	A	without rotation lock	75	8	30