

## Locating pins removable Form C

### Item description/product images



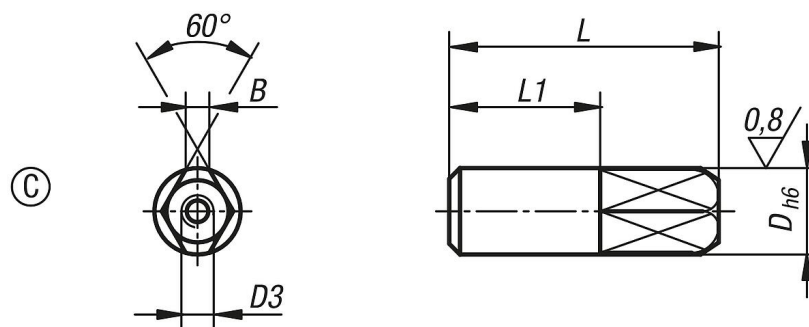
### Description

**Material:**  
Tool steel.

**Version:**  
Hardened and ground (HRC 56 +2).

**Note:**  
The locating pins can be easily removed with an extractor.

### Drawings



### Overview of items

Order No.	Form	D	D3	L	L1	B
K0817.082	C	8	M3	25	14	2,2
K0817.102	C	10	M3	30	17	3
K0817.122	C	12	M5	34	20	3,5
K0817.162	C	16	M5	42	26	5
K0817.202	C	20	M5	47	30	6
K0817.252	C	25	M5	49	30	8