

Self-aligning pads, adjustable, with O-ring and exchangeable inserts, Form 0, stainless steel insert with diamond impregnated face

Item description/product images



Description

Material:

Body carbon steel.

Ball rust and acid resistant steel.

Insert:

Form 0 stainless steel.

Version:

Body tempered, black oxidised.

Ball hardened, bright.

Insert:

Form 0 diamond surface comparable to 100 grade abrasive grit.

Note:

Self-aligning pads are used to support and clamp unmachined and machined workpieces.

They also serve as stops, supports and thrust pads in fixtures and toolmaking.

The ball can be removed from the housing by applying light pressure to the socket head screw.

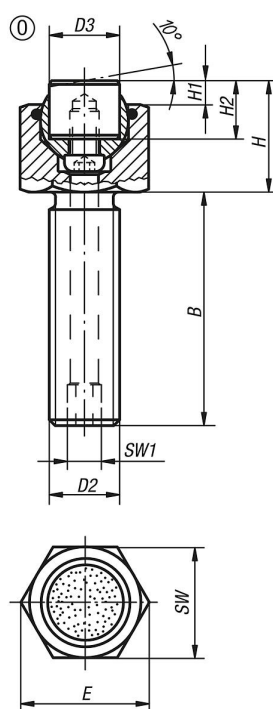
Ball secured against rotation.

Advantages:

Highly cost-effective as inserts can be exchanged.

The built-in O-ring holds the ball in place and keeps dirt and foreign particles out, ensuring uniform movement.

Drawings



Self-aligning pads, adjustable, with O-ring and exchangeable inserts, Form 0, stainless steel insert with diamond impregnated face

Overview of items

Order No.	Form	B	D2	D3	H	H1	H2	E	SW	SW1	Ball-Ø	Load rating max. kN (static load only)	Order No. stainless steel insert, diamond surface
K0289.510X015	0	15	M10	10	17	4	10	19,6	17	3	13	19	K0385.10105
K0289.510X030	0	30	M10	10	17	4	10	19,6	17	3	13	19	K0385.10105
K0289.510X050	0	50	M10	10	17	4	10	19,6	17	3	13	19	K0385.10105
K0289.512X020	0	20	M12	12	19	4	10	21,9	19	5	15	30	K0385.12105
K0289.512X040	0	40	M12	12	19	4	10	21,9	19	5	15	30	K0385.12105
K0289.512X060	0	60	M12	12	19	4	10	21,9	19	5	15	30	K0385.12105
K0289.516X025	0	25	M16	16	23	4	10	27,7	24	6	20	50	K0385.16105
K0289.516X050	0	50	M16	16	23	4	10	27,7	24	6	20	50	K0385.16105
K0289.516X080	0	80	M16	16	23	4	10	27,7	24	6	20	50	K0385.16105
K0289.520X030	0	30	M20	20	24	4	10	34,6	30	8	23	85	K0385.20105
K0289.520X060	0	60	M20	20	24	4	10	34,6	30	8	23	85	K0385.20105
K0289.520X100	0	100	M20	20	24	4	10	34,6	30	8	23	85	K0385.20105
K0289.524X040	0	40	M24	25	30	4	10	41,6	36	10	28	121	K0385.25105
K0289.524X100	0	100	M24	25	30	4	10	41,6	36	10	28	121	K0385.25105