

Grub screws with hex socket and flat point DIN EN ISO 4026, without thread lock

Item description/product images



Description

Material:

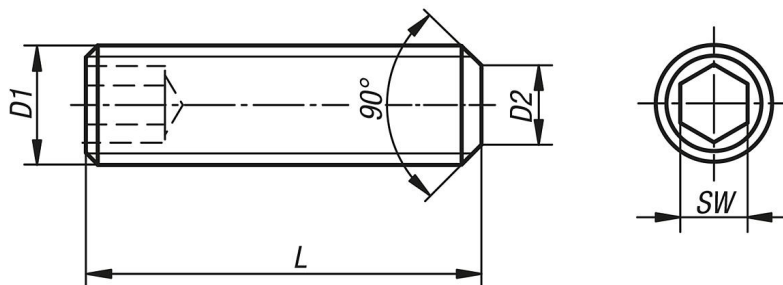
Steel or stainless steel A2.

Version:

Steel class 45 H, black.

Stainless steel A2-70, bright.

Drawings



Overview of items

Grub screws with flat point, hexagon socket DIN EN ISO 4026

Order No.	Main material	L	D1	D2	SW
K0707.03X5	steel	5	M3	2	1,5
K0707.03X6	steel	6	M3	2	1,5
K0707.03X8	steel	8	M3	2	1,5
K0707.03X10	steel	10	M3	2	1,5
K0707.03X12	steel	12	M3	2	1,5
K0707.03X16	steel	16	M3	2	1,5
K0707.03X20	steel	20	M3	2	1,5
K0707.04X5	steel	5	M4	2,5	2
K0707.04X6	steel	6	M4	2,5	2
K0707.04X8	steel	8	M4	2,5	2
K0707.04X10	steel	10	M4	2,5	2
K0707.04X12	steel	12	M4	2,5	2
K0707.04X16	steel	16	M4	2,5	2
K0707.04X20	steel	20	M4	2,5	2
K0707.04X25	steel	25	M4	2,5	2
K0707.05X5	steel	5	M5	3,5	2,5
K0707.05X6	steel	6	M5	3,5	2,5
K0707.05X8	steel	8	M5	3,5	2,5
K0707.05X10	steel	10	M5	3,5	2,5
K0707.05X12	steel	12	M5	3,5	2,5
K0707.05X16	steel	16	M5	3,5	2,5
K0707.05X20	steel	20	M5	3,5	2,5
K0707.05X25	steel	25	M5	3,5	2,5
K0707.05X30	steel	30	M5	3,5	2,5
K0707.06X6	steel	6	M6	4	3
K0707.06X8	steel	8	M6	4	3

Grub screws with hex socket and flat point DIN EN ISO 4026, without thread lock

Overview of items

Order No.	Main material	L	D1	D2	SW
K0707.06X10	steel	10	M6	4	3
K0707.06X12	steel	12	M6	4	3
K0707.06X16	steel	16	M6	4	3
K0707.06X20	steel	20	M6	4	3
K0707.06X25	steel	25	M6	4	3
K0707.06X30	steel	30	M6	4	3
K0707.06X35	steel	35	M6	4	3
K0707.06X40	steel	40	M6	4	3
K0707.06X45	steel	45	M6	4	3
K0707.06X50	steel	50	M6	4	3
K0707.06X60	steel	60	M6	4	3
K0707.08X8	steel	8	M8	5,5	4
K0707.08X10	steel	10	M8	5,5	4
K0707.08X12	steel	12	M8	5,5	4
K0707.08X16	steel	16	M8	5,5	4
K0707.08X20	steel	20	M8	5,5	4
K0707.08X25	steel	25	M8	5,5	4
K0707.08X30	steel	30	M8	5,5	4
K0707.08X35	steel	35	M8	5,5	4
K0707.08X40	steel	40	M8	5,5	4
K0707.08X45	steel	45	M8	5,5	4
K0707.08X50	steel	50	M8	5,5	4
K0707.08X60	steel	60	M8	5,5	4
K0707.08X70	steel	70	M8	5,5	4
K0707.08X80	steel	80	M8	5,5	4
K0707.10X10	steel	10	M10	7	5
K0707.10X12	steel	12	M10	7	5
K0707.10X16	steel	16	M10	7	5
K0707.10X20	steel	20	M10	7	5
K0707.10X25	steel	25	M10	7	5
K0707.10X30	steel	30	M10	7	5
K0707.10X35	steel	35	M10	7	5
K0707.10X40	steel	40	M10	7	5
K0707.10X45	steel	45	M10	7	5
K0707.10X50	steel	50	M10	7	5
K0707.10X60	steel	60	M10	7	5
K0707.10X70	steel	70	M10	7	5
K0707.10X80	steel	80	M10	7	5
K0707.10X90	steel	90	M10	7	5
K0707.10X100	steel	100	M10	7	5
K0707.103X5	stainless steel	5	M3	2	1,5
K0707.103X6	stainless steel	6	M3	2	1,5
K0707.103X8	stainless steel	8	M3	2	1,5
K0707.103X10	stainless steel	10	M3	2	1,5
K0707.103X12	stainless steel	12	M3	2	1,5
K0707.104X5	stainless steel	5	M4	2,5	2
K0707.104X6	stainless steel	6	M4	2,5	2
K0707.104X8	stainless steel	8	M4	2,5	2
K0707.104X10	stainless steel	10	M4	2,5	2
K0707.104X12	stainless steel	12	M4	2,5	2
K0707.104X16	stainless steel	16	M4	2,5	2
K0707.104X20	stainless steel	20	M4	2,5	2
K0707.105X5	stainless steel	5	M5	3,5	2,5
K0707.105X6	stainless steel	6	M5	3,5	2,5
K0707.105X8	stainless steel	8	M5	3,5	2,5
K0707.105X10	stainless steel	10	M5	3,5	2,5
K0707.105X12	stainless steel	12	M5	3,5	2,5
K0707.105X16	stainless steel	16	M5	3,5	2,5
K0707.105X20	stainless steel	20	M5	3,5	2,5
K0707.105X25	stainless steel	25	M5	3,5	2,5
K0707.105X30	stainless steel	30	M5	3,5	2,5
K0707.106X6	stainless steel	6	M6	4	3

Grub screws with hex socket and flat point DIN EN ISO 4026, without thread lock

Overview of items

Order No.	Main material	L	D1	D2	SW
K0707.106X8	stainless steel	8	M6	4	3
K0707.106X10	stainless steel	10	M6	4	3
K0707.106X12	stainless steel	12	M6	4	3
K0707.106X16	stainless steel	16	M6	4	3
K0707.106X20	stainless steel	20	M6	4	3
K0707.106X25	stainless steel	25	M6	4	3
K0707.106X30	stainless steel	30	M6	4	3
K0707.106X35	stainless steel	35	M6	4	3
K0707.106X40	stainless steel	40	M6	4	3
K0707.108X8	stainless steel	8	M8	5,5	4
K0707.108X10	stainless steel	10	M8	5,5	4
K0707.108X12	stainless steel	12	M8	5,5	4
K0707.108X16	stainless steel	16	M8	5,5	4
K0707.108X20	stainless steel	20	M8	5,5	4
K0707.108X25	stainless steel	25	M8	5,5	4
K0707.108X30	stainless steel	30	M8	5,5	4
K0707.108X35	stainless steel	35	M8	5,5	4
K0707.108X40	stainless steel	40	M8	5,5	4
K0707.108X45	stainless steel	45	M8	5,5	4
K0707.108X50	stainless steel	50	M8	5,5	4
K0707.110X10	stainless steel	10	M10	7	5
K0707.110X12	stainless steel	12	M10	7	5
K0707.110X16	stainless steel	16	M10	7	5
K0707.110X20	stainless steel	20	M10	7	5
K0707.110X25	stainless steel	25	M10	7	5
K0707.110X30	stainless steel	30	M10	7	5
K0707.110X35	stainless steel	35	M10	7	5
K0707.110X40	stainless steel	40	M10	7	5
K0707.110X45	stainless steel	45	M10	7	5
K0707.110X50	stainless steel	50	M10	7	5