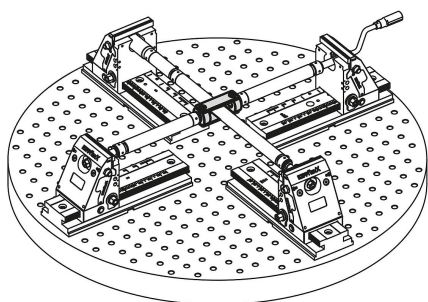


## Couplings for cross-clamping

### Item description/product images



### Description

**Material:**

Carbon steel.

**Version:**

Black oxidised.

**Note:**

With the coupling for cross-clamping, two 5-axis clamping systems compact / KIPPFlexX can be connected with each other.

This enables workpieces to be clamped from four sides.

To enable the coupling for cross-clamping to be precisely centred on the transverse spindle, a threaded spindle and a spindle nut is required for each end.

These items must be ordered separately as accessories under the following numbers:

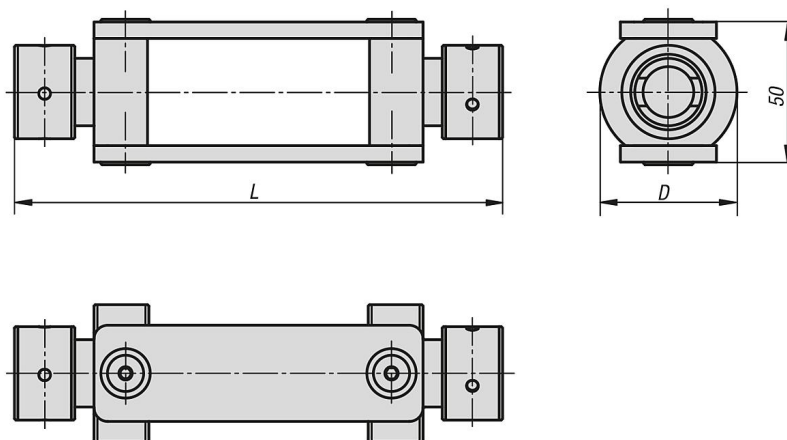
Threaded spindle K1555.999.008

Spindle nut K0940.999.003

**Attention:**

Due to the design of the coupling, the maximum clamping depth for cross clamping is 12mm.

### Drawings



### Overview of items

Order No.	D	L
K0992.178	50	178