

Swivel castors with stop fix

Item description/product images



Description

Material:

Housing, steel plate.

Wheel tyre, high quality elastic solid rubber.

Wheel rim, high quality unbreakable polyamide.

Version:

Housing, press-formed.

Swivel housing, double-row ball bearings in a swivel head.

Ball bearing wheel axle bearings.

Note:

Wheel axle bolted.

Application:

Maximum travel comfort, excellent cushioning of the transported goods. The new soft rubber series brings noticeable noise reduction in all applications.

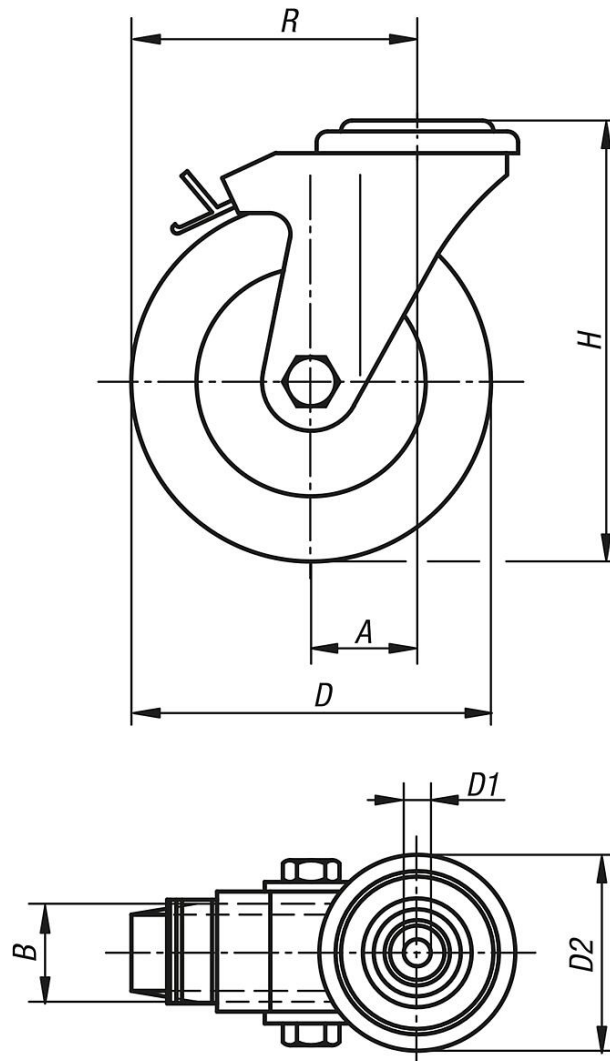
Temperature range:

-25 °C to +80 °C.

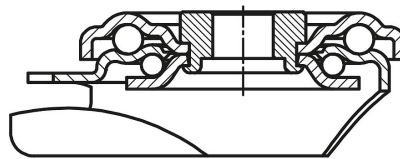
Swivel castors with stop fix

Drawings

swivel castor
with "stop-fix"



swivel head bearing:



Overview of items

Order No.	Item	Wheel bearing	A	B	D	D1	D2	H	R	Permissible load kg
K1789.101000402	Swivel castor	ball bearing	36	40	100	13	70	125	86	150
K1789.101250402	Swivel castor	ball bearing	40	40	125	13	70	150	102,5	150

