

Swivel castors with stop fix

Item description/product images



Description

Material:

Housing steel plate.
Wheel treads solid rubber.
Wheel rims polyamide.

Version:

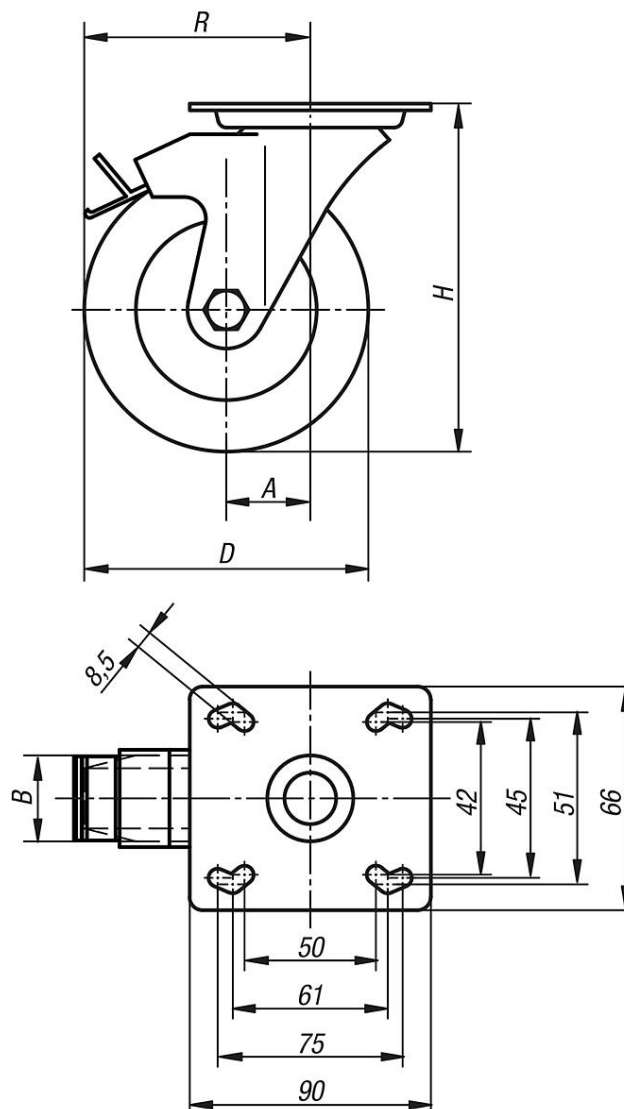
Housing press formed.
Double ball bearing in the castor head.
Plain bearing in wheels.

Note:

Wheel axle bolted.
Solid rubber tyres are shock and impact proof and non-corroding.

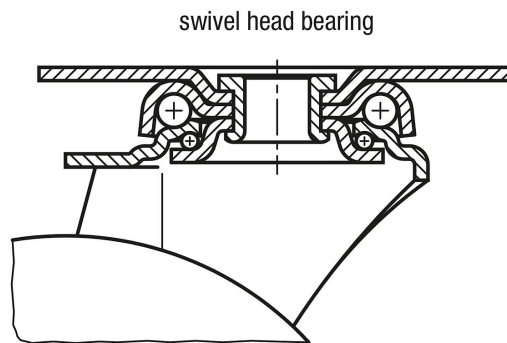
Drawings

swivel castor
with "stop-fix"



Swivel castors with stop fix

Drawings



Overview of items

Order No.	Item	Version 1	Wheel bearing	A	B	D	H	R	Permissible load kg
K1760.080252	Swivel castor	with stop-fix locking system	plain bearing	40	25	80	111	80	60
K1760.100322	Swivel castor	with stop-fix locking system	plain bearing	40	32	100	136	90	90
K1760.125252	Swivel castor	with stop-fix locking system	plain bearing	40	25	125	161	102,5	80
K1760.125322	Swivel castor	with stop-fix locking system	plain bearing	40	32	125	161	102,5	100