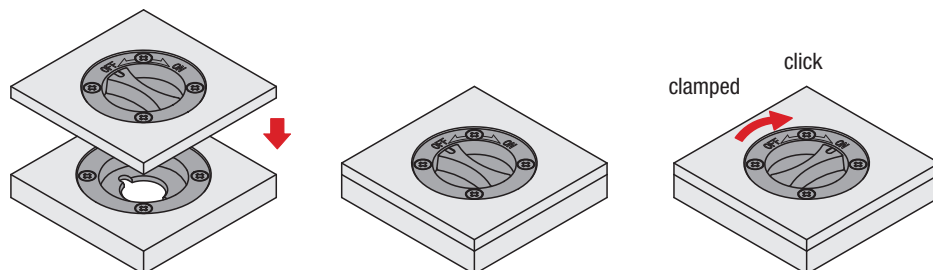


# Technical information for quarter-turn clamp locks with recessed grip and matching clamping plate.

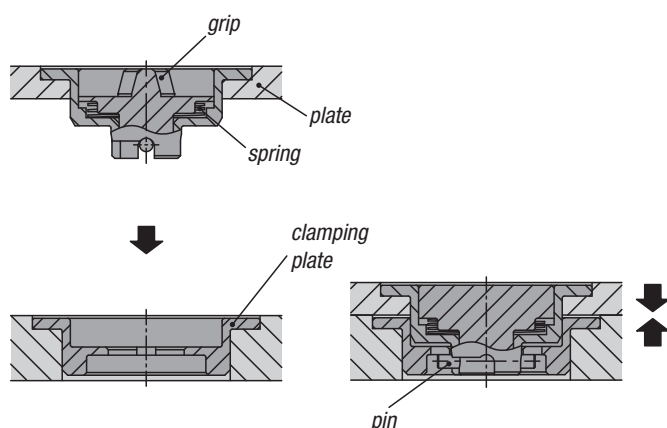
## 1. Application:



Ensure that the twist grip is in the „OFF“ position. Insert the quarter-turn clamp lock into the clamping plate and turn the grip to the 'ON' position. When fully clamped, an audible click will be heard.

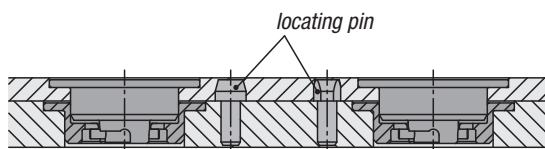
## 2. Function:

By rotating the grip, the pin engages in the clamping plate, the spring is compressed and presses the plate down.

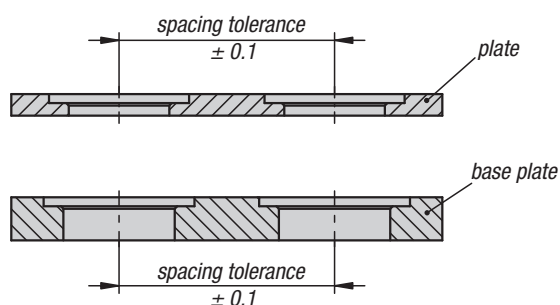


## Repeat accuracy:

A higher repeat accuracy can be achieved with the aid of additional locating pins (not supplied).

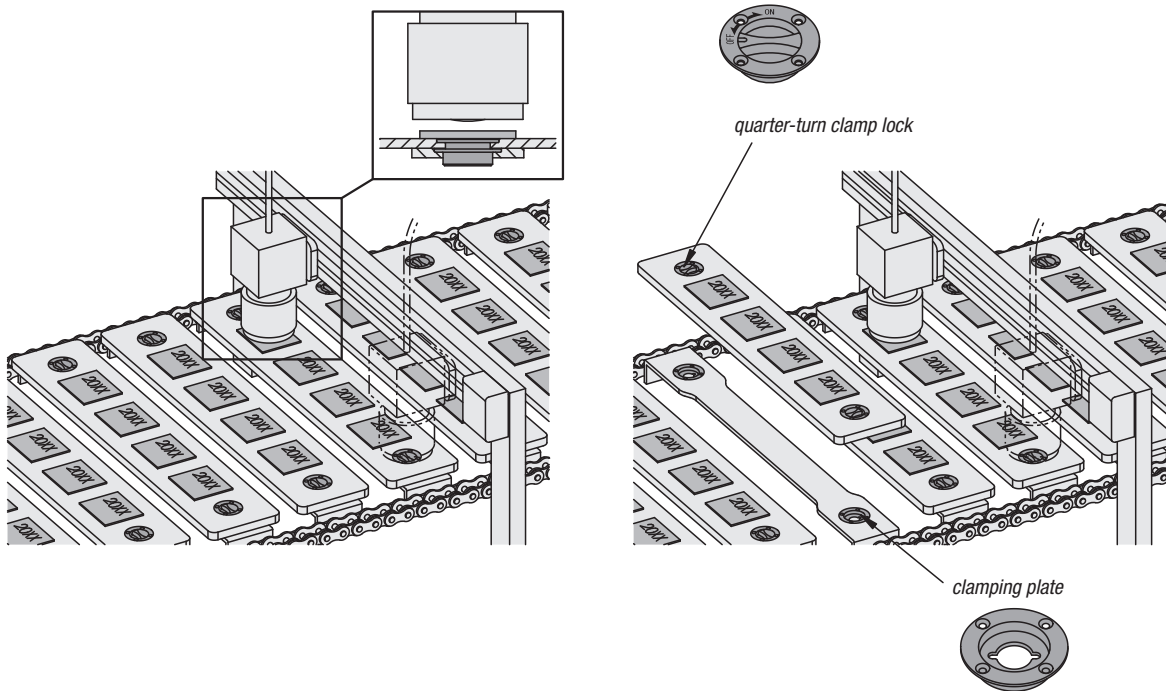


## Production tolerances:



## Application examples:

### Modifying of a test fixture



### Modifying the guide for the packaging

