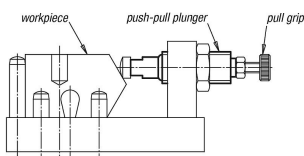
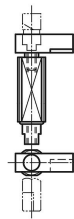


Spring plungers push-pull

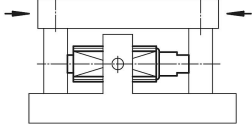
Item description/product images



push-pull plunger

pull plunger
as lock

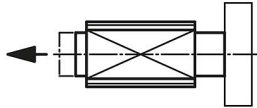
push-pull plunger as carrier



Application:

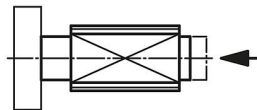
As **push plunger**:

The spring force pushes the object.



As **pull plunger**:

The spring force pulls the object.

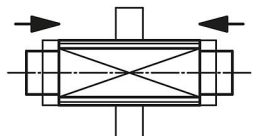


As **push-pull plunger**:

In this case the internal pin has a fixed position.

The threaded sleeve acts as carrier.

The spring force pushes or pulls the object in both directions.



Description

Material:

Steel.

Version:

Sleeve blue electro zinc-plated.

Spring pins black oxidised.

Note:

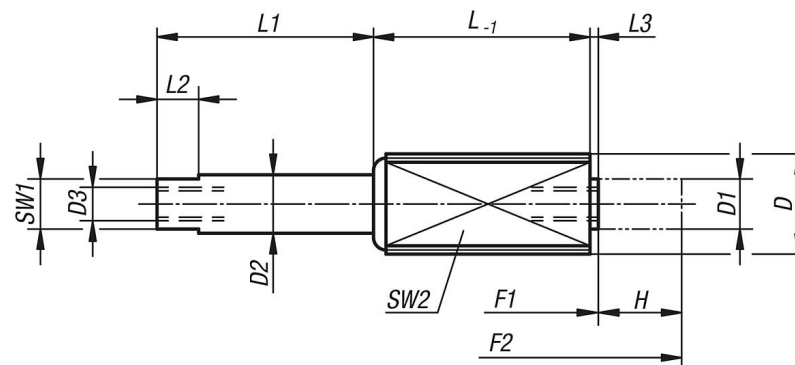
The tapped hole in both ends of the spring pin allow various inserts to be attached e.g. prisms, thrust pins, self-aligning pads, knobs, grips etc.

Assembly:

LOCTITE threadlocker K0655.243.... is recommended for gluing the threaded sleeve in position.

Spring plungers push-pull

Drawings



Overview of items

Push-Pull spring plungers

Order No.	D	D1	D2	D3	H	L	L1	L2	L3	SW1	SW2 square	Spring force initial pressure F1 approx. N	Spring force final pressure F2 approx. N
K0373.1202004	M12	6	7	M4x8	3,5	11	4,5	5	1	6	10	5	20
K0373.1202006	M12	6	7	M4x8	6	18,5	7	5	1	6	10	5	20
K0373.1202010	M12	6	7	M4x8	10	26	11	5	1	6	10	5	20
K0373.1206003	M12	6	7	M4x8	3	11	4,5	5	1	6	10	12	40
K0373.1206005	M12	6	7	M4x8	5	18,5	7	5	1	6	10	12	40
K0373.1206008	M12	6	7	M4x8	8	26	11	5	1	6	10	12	40
K0373.1212503	M12	6	7	M4x8	3	11	4,5	5	1	6	10	20	100
K0373.1212505	M12	6	7	M4x8	5	18,5	7	5	1	6	10	20	100
K0373.1212508	M12	6	7	M4x8	8	26	11	5	1	6	10	20	100
K0373.1815004	M18x1,5	10	11	M6x12	4	17	6	6	2,5	9	16	50	150
K0373.1815007	M18x1,5	10	11	M6x12	7	29,5	11,5	6	2,5	9	16	50	150
K0373.1815013	M18x1,5	10	11	M6x12	12,5	45,5	16	6	2,5	9	16	50	150