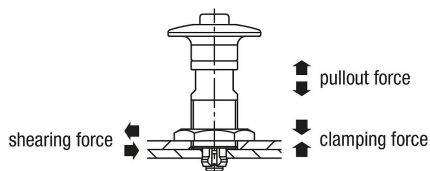
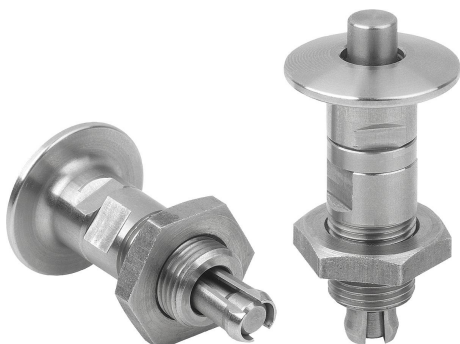


## Locking pins, stainless steel with stainless steel mushroom grip

### Item description/product images



### Description

#### Product description:

With the locking pin, two separate plates can be joined quickly and easily with no counterpiece.

#### Material:

Housing and push button stainless steel.

#### Version:

Housing and push button bright.

#### Note:

Mounting option for plate thickness 3 - 12 mm.

Use a hard material such as stainless steel for the baseplate.

#### Type of operation:

Screw the locking pin into the mounting plate until the thread can be seen on the other side.

Press the knob and pass the clamping pin through the hole in the premachined baseplate.

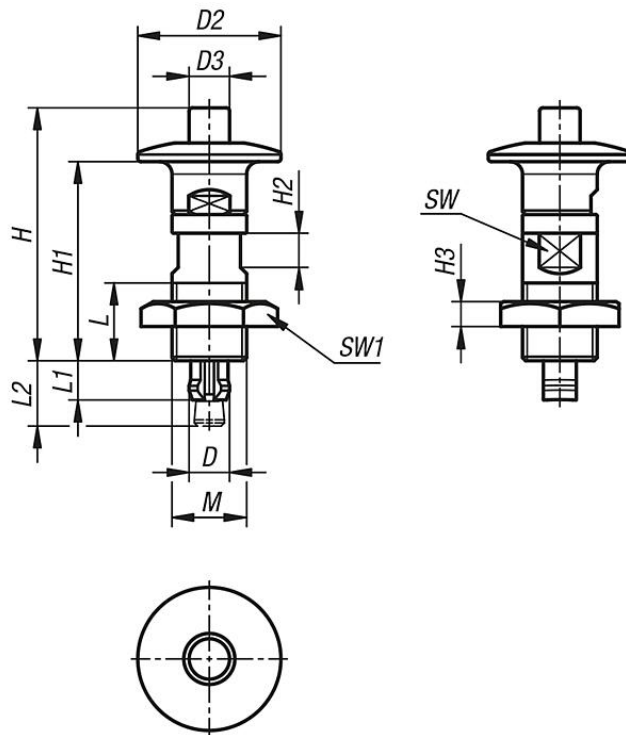
Screw the locking pin in the reverse direction till both plates come together, then secure with the locknut.

#### Drawing reference:

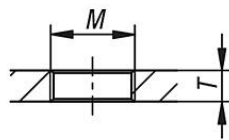
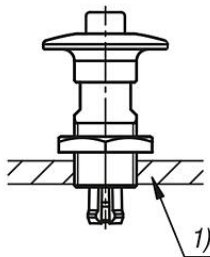
- 1) Mounting plate
- 2) Base plate

# Locking pins, stainless steel with stainless steel mushroom grip

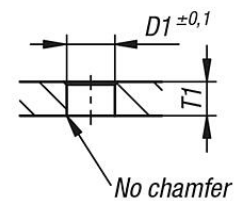
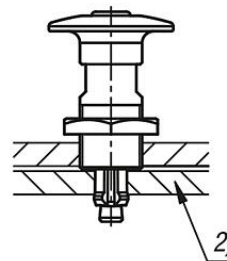
## Drawings



Mounting hole in the mounting plate



Mounting hole in the base plate



## Overview of items

### Locking pin stainless steel

Order No.	D	D1	D2	D3	H	H1	H2	H3	L	L1	L2	M	SW	SW1	T	T1	Temperature resistance	Shearing force kN	Pullout force F kN	Clamping force N
K1565.173	6,5	6,5	23	6,5	40	32	5,5	4	12,5	6,5	10,5	M12x1	10	19	3-8	3	≤180 °C	0,2	0,15	3
K1565.176	6,5	6,5	23	6,5	37	29	5,5	4	12,5	9,5	13,5	M12x1	10	19	3-8	6	≤180 °C	0,2	0,15	3
K1565.193	8,5	8,5	32	10	51	41,5	7	4	16,5	6,5	11	M16X1	14	24	3-12	3	≤180 °C	0,4	0,3	6
K1565.196	8,5	8,5	32	10	48	38,5	7	4	16,5	9,5	14	M16X1	14	24	3-12	6	≤180 °C	0,4	0,3	6

