

# Mushroom knobs biopolymer external thread

## Item description/product images



## Description

### Material:

Biopolymer wood fibre reinforced, natural beech.

Biopolymer fibreglass reinforced, black grey.

Screw stainless steel 1.4305.

### Version:

Natural beech with wood fibre optic or coloured black grey.

Threaded pin bright stainless steel.

### Note:

Good mechanical strength (tested to a minimum of 2x safety factor).

Good chemical resistance.

Suitable for outdoor use (weather resistant).

### Advantages:

This biopolymer is manufactured entirely from renewable raw materials (oil free).

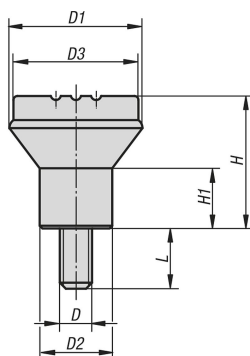
Good CO<sub>2</sub> impact compared to petroleum-based plastics.

Conservation of finite fossil resources.

The wood fibres originate 100% from local, sustainably managed forests in Germany.

Biopolymer is suitable for recycling (comparable to thermoplastics).

## Drawings



## Overview of items

Order No.	Main colour	D	D1	D2	D3	H	H1	L
K0251.10005143X10	natural beech	M5	21	12	19	21	10	10
K0251.10006143X15	natural beech	M6	25	14	23	25	12	15
K0251.10008143X15	natural beech	M8	33	18	31	33	15	15
K0251.1000590X10	black grey RAL 7021	M5	21	12	19	21	10	10
K0251.1000690X15	black grey RAL 7021	M6	25	14	23	25	12	15
K0251.1000890X15	black grey RAL 7021	M8	33	18	31	33	15	15

