

## Fastening sets for straps and angles

### Item description/product images



### Description

**Material:**

Steel.

**Version:**

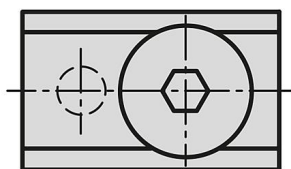
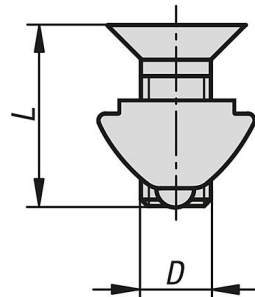
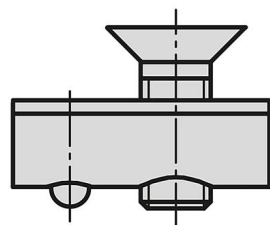
Slot key electro zinc-plated.

Screw electro zinc-plated, black.

**Note:**

Consists of two DIN 7991 countersunk screws and two slot nuts.

### Drawings



### Overview of items

#### Fastening sets for straps and angles

Order No.	Version 1	Version 2	Slot width	D	L
K1044.06	type I	slot key with step	6	M6	10
K1044.08	type I	slot key with step	8	M8	14