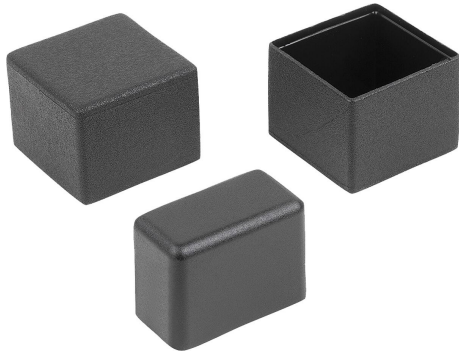


Protective caps, plastic for square tubes

Item description/product images



Description

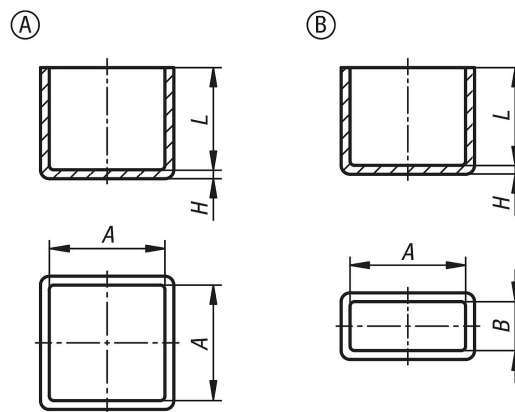
Material:
Body polyethylene.

Version:
Body black.

Application:
The caps serve as protection against sharp edges on pipes.

Assembly:
They can be pushed in by hand or tapped in with a plastic hammer.

Drawings



Overview of items

Protective caps, plastic for square tubes

Order No.	Form	Form definition	A	B	H	L
K2029.2020	A	Square	20	-	2	24
K2029.2525	A	Square	25	-	2	23
K2029.3030	A	Square	30	-	2	23
K2029.4040	A	Square	40	-	3	28
K2029.5050	A	Square	50	-	2	28
K2029.3015	B	rectangular	30	15	2	22
K2029.4020	B	rectangular	40	20	2	8