



BALL LOCK PINS

SELF-LOCKING. FLEXIBLE. VERSATILE.

- » **STAINLESS STEEL PRODUCTS** New look. Tried and tested function
- » **3D-CONFIGURATOR** Design online
- » **INTERNAL** E-Auto



Dear readers,

Flexibility and intelligent handling are important factors for the development of successful ideas today. In our increasingly global world, organisations must not only learn to accept changes but must also actively shape this process. With its variable production platform, HEINRICH KIPP WERK shows that the new ball lock pins satisfy individual customer requirements 100%. The large number of versions available give this platform highest flexibility. Another innovation at KIPP is the 3D configurator. With this online tool it is possible to freely configure a product with special colours, dimensions and from the desired material.

By all innovations, the reliability and quality are guaranteed.
TRUST IN KIPP

Otto Braun, Sales Management

NEW BALL LOCK PINS With variable grip system

HEINRICH KIPP WERK have expanded the range of ball lock pins. Stainless steel ball lock pins from KIPP are used for the easy joining or fixating of two components or workpieces. A secure lock is made by simply pressing and releasing a button.

A special feature of these products is the high variability. In addition to the basic types, KIPP now offers three different plastic grip versions according to

requirements. The mushroom grip saves space, the L-grip enables intuitive handling and the T-grip has a convincing tangibility. Another optical alternative is an additional version with a stainless steel mushroom grip.

The assembly of the ball lock pins is carried out on a modular basis, enabling KIPP to produce and offer large quantities at an attractive price.



NEW STAINLESS STEEL PRODUCTS Now in matt look

Clamping levers, cam levers, pull handles: Many of the proven KIPP operating parts are now available in an attractive stainless steel design. The sand blasted products with a matt finish are a practical and attractive product expansion - they are rust-free, resistant and unobtrusive.

Due to hygienic requirements the use of stainless steel products in the food stuff or chemical sectors is an absolute must. The high life expectancy and the possibility

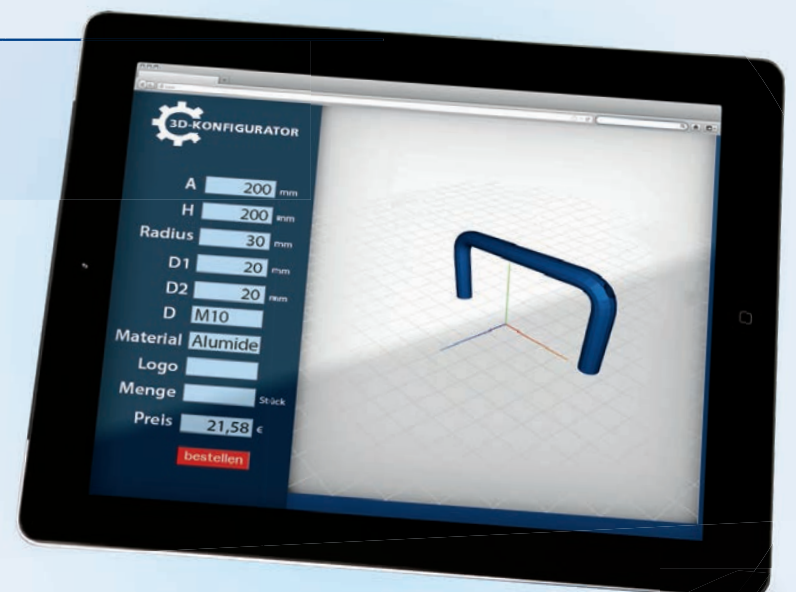
of hygienic cleaning make them suitable for use on plants and machines in sensitive areas or for use outdoors.

Stainless steel products also often find use in vehicle construction and by storage and operating facilities. The main benefits are the advantages of the material: The matt surface is non-reflective, which is advantageous when installed in equipment that work with optical sensors

NEW OPERATING PARTS FROM THE 3D PRINTER Configurator for pull handles and ball knobs

Henceforth, customers of HEINRICH KIPP WERK can configure individual operating parts. Simply enter specific values online and the configured part is produced in the 3D printer. The customer becomes a component precisely tailored to their needs - uncomplicated and on demand.

After logging in, customers can use the practical online tool to enter specific data and dimensions such as radius or thread size. Then the desired colour and quantity are selected. When the configuration is completed, the data is processed and sent to the 3D printer. Ordering and payment is then carried out as usual.



[Link to 3D configurator](#)

NEW UNILock WORKHOLDING TECHNOLOGY

Saves setup times

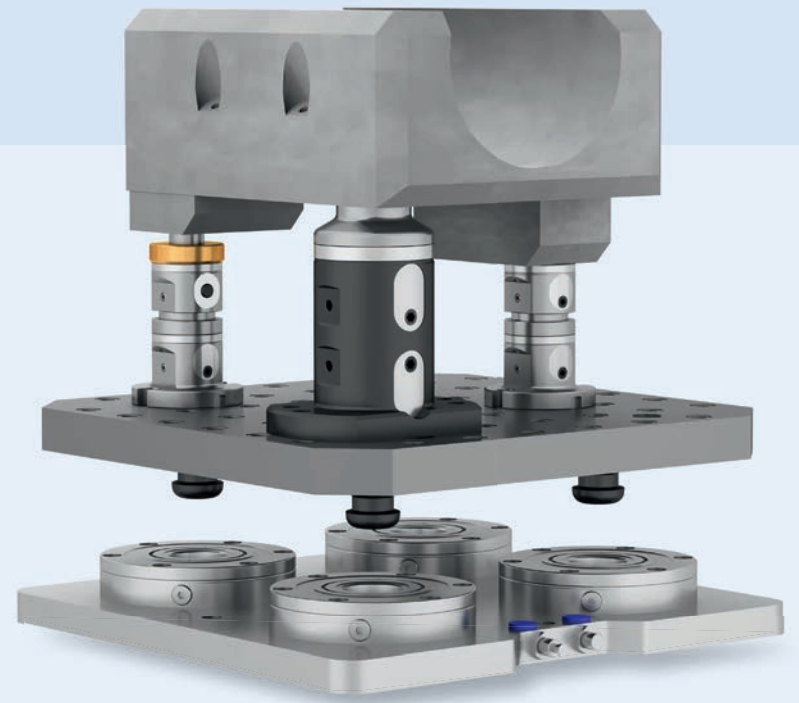
HEINRICH KIPP WERK offers several clamping systems that are all compatible with each other.

An example is the UNI lock 5-axis module system combined with the UNI lock zero-point clamping system. This combination enables a highly efficient machine utilisation. The zero-point clamping system is mounted on the machine table. Other KIPP clamping systems such as the 5-axis module system or the 5-axis vices can be exchanged within seconds. The mounted 5-axis module system is excellent for 5 side machining of complex, small to medium workpieces.

Workpieces can be held with the 5-axis module system or directly on the zero-point clamping system.

Unproductive auxiliary processing times such as renewed clamping or positioning are completely eliminated.

The 5-axis module system from KIPP is not only available in the system size 80, but is now also available in system size 50.



UNI lock zero-point system with Uni lock module systems 50, 80 and adapters

NEW KIPP EXPANDS THE PAYMENT OPTIONS

Paying in the online shop

Apart from the classic invoice, HEINRICH KIPP WERK now offers its customers three further payment options in the online shop.

Credit card (VISA and MasterCard) PayPal and SOFORT Überweisung. The customer now has the possibility to decide themselves in which

manner they want to conduct their payments. With the expansion of the payment options, online bills can be safely and comfortably settled. These further payment methods save expensive time and reduces effort.



To the online shop



AEO CERTIFICATION

Authorised Economic Operator – customs simplifications / security

As an authorised economic operator, the HEINRICH KIPP WERK guarantees consistent security in the international supply chain. The essential objective of this is the prevention of access to goods and commodities by unauthorised persons.

These security measures ensure that significantly less controls on goods and documents need to be carried out. It also gives the customer the guarantee that the products can be delivered on time.



KIPP SERVICE: VERY GOOD

TÜV certification successfully passed once again

The TÜV Saarland conducted a neutral customer survey during 2017. For the second time KIPP was assessed by its customers with the mark "VERY GOOD" (1.7). This mark applies to both satisfaction with the performance of service and with the company as a whole. 99.6% of the customers said that they would order from KIPP again.

KIPP PRODUCTS IN USE



MOTAN / ARBURG / KIPP

The company MOTAN-COLTRONIC in Friedrichsdorf specialises in system solutions for raw material handling: drying, mixing, dispensing, conveying liquids, granules and powders. By dispensing and mixing equipment e.g. "MINICOLOR G" MOTAN use KIPP stargrips.

The five lobe grips enable rapid cleaning during material changes and a simple calibration of the dispensing equipment. This guarantees excellent mixing quality with highest repeat accuracy. MOTAN peripheral equipment combine ideally with the Allrounder model of ARBURG injection molding machines. 25 ARBURG injection molding machines are in use throughout the KIPP group of companies.

Conclusion: all three family run companies look for the best quality by machines and elements in their production facilities located in Germany.

internal

OPERA SOIREE

On the 28th June 2017 audiences of the opera soiree at HEINRICH KIPP WERK were able to enjoy classical music and dramatic arias.

Under the baton of the conductor Sven Gnass and in front of impressive backdrops, soloists were welcomed with great enthusiasm from the spectators.



E-AUTO

Since the summer of 2017, KIPP has added an E-Smart Forfour to its vehicle pool for short journeys.

It offers an environmentally friendly alternative to the normal petrol driven vehicles. The acquisition of more electro vehicles is planned.



contact

HEINRICH KIPP WERK KG
Heubergstraße 2
72172 Sulz am Neckar, Germany
Tel. +49 7454 793-0
Fax +49 7454 793-7982
info@kipp.com
www.kipp.com

Request free of charge by fax

+ 49 7454 793-7982



- KIPP catalogue Operating parts | Standard elements
- KIPP catalogue Workholding systems
- KIPP brochure Ball lock pins
- KIPP CAD library 2D/3D

Company

Name

Department

Street/Postbox

Post code/City

Telephone

Fax

Email

