

## Knurled knobs biopolymer with internal thread

### Item description/product images



### Description

#### Material:

Biopolymer wood fibre reinforced, natural beech.  
Biopolymer fibreglass reinforced, black grey.  
Bush or screw stainless steel 1.4305.

#### Version:

Natural beech with wood fibre optic or coloured black grey.  
Bush and threaded pin bright stainless steel.

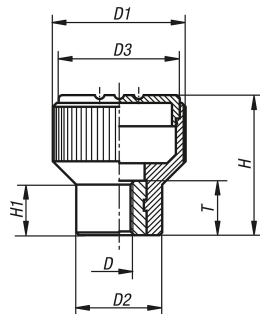
#### Note:

Good mechanical strength (tested to a minimum of 2x safety factor).  
Good chemical resistance.  
Suitable for outdoor use (weather resistant).

#### Advantages:

This biopolymer is manufactured entirely from renewable raw materials (oil free).  
Good CO<sub>2</sub> impact compared to petroleum-based plastics.  
Conservation of finite fossil resources.  
The wood fibres originate 100% from local, sustainably managed forests in Germany.  
Biopolymer is suitable for recycling (comparable to thermoplastics).

### Drawings



### Overview of items