

Quarter-turn lock, zinc long version

Item description/product images



Description

Material:

Housing and actuator die-cast zinc.

Version:

Housing and actuator chrome-plated.

Note:

Rating IP65. This is achieved using an additional O-ring underneath the actuator and a flat seal attached to the housing. The quarter-turn lock can be installed pre-assembled.

Please order the required tongue separately. Every tongue can be combined with this housing.

*Dimension A results from the combination of the quarter turn lock and the tongue and is specified with the matching tongues.

Accessory:

Key K0535.

Tongue for steel quarter-turn lock K1114.

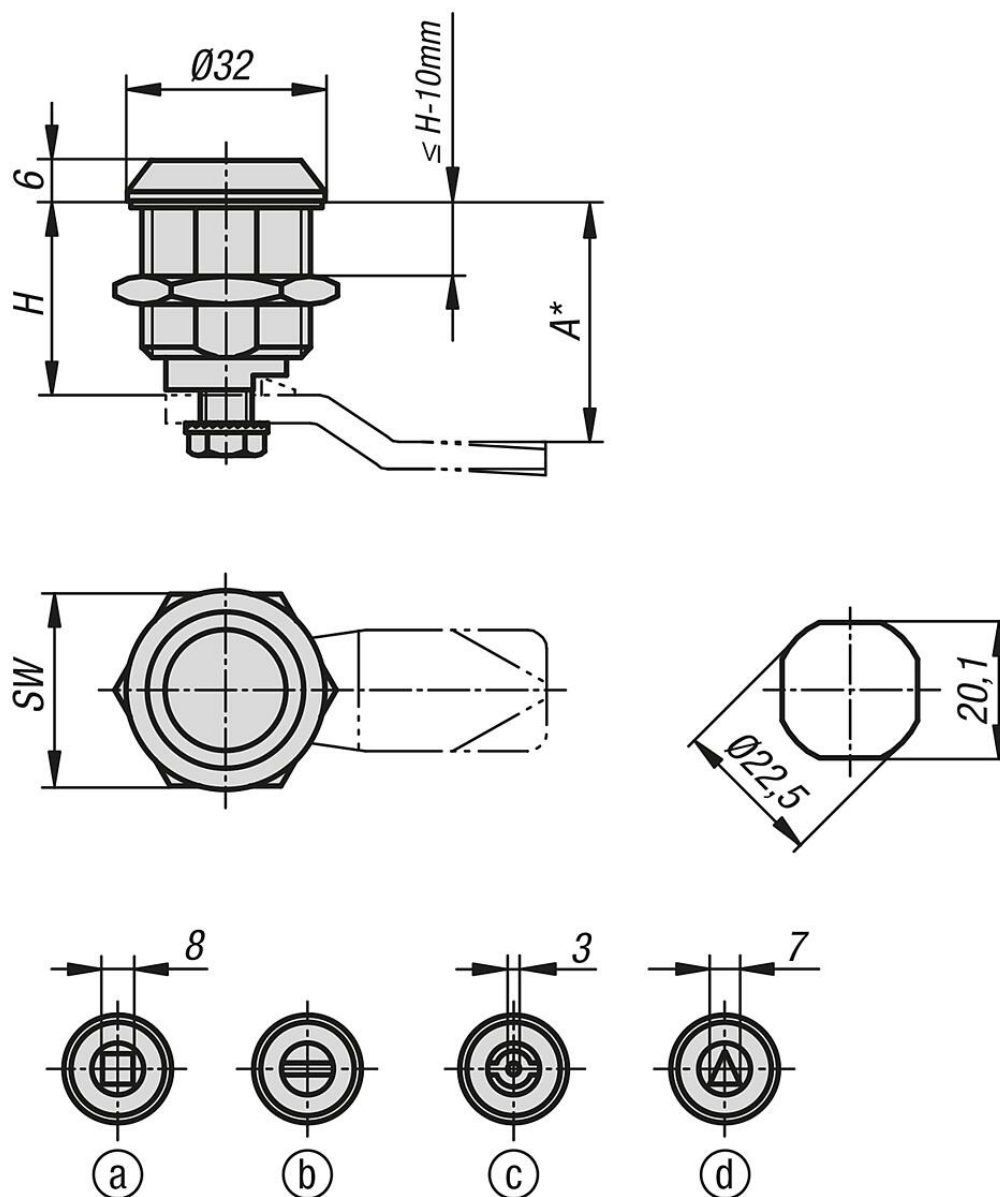
Drawing reference:

Actuation:

- a) square 8 mm
- b) slit
- c) double lug 3 mm
- d) triangle 7 mm

Quarter-turn lock, zinc long version

Drawings



Overview of items

Quarter-turn lock zinc, long version

Order No.	H	Actuation	S max.	SW
K1113.18301	30	square 8 mm	18	27
K1113.40301	30	double lug 3 mm	18	27
K1113.20301	30	slot	18	27
K1113.87301	30	Triangle 7 mm	18	27
K1113.18401	40	square 8 mm	18	27
K1113.40401	40	double lug 3 mm	18	27
K1113.20401	40	slot	18	27
K1113.87401	40	Triangle 7 mm	18	27
K1113.18501	50	square 8 mm	18	27
K1113.40501	50	double lug 3 mm	18	27

Quarter-turn lock, zinc long version

Overview of items

Order No.	H	Actuation	S max.	SW
K1113.20501	50	slot	18	27
K1113.87501	50	Triangle 7 mm	18	27