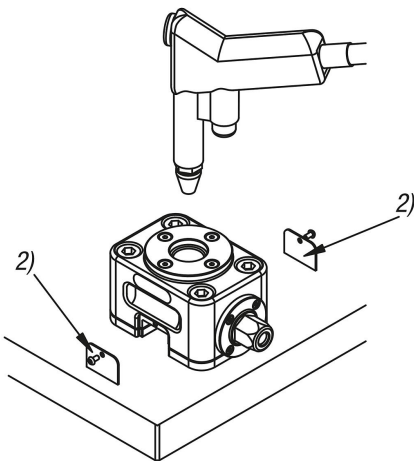
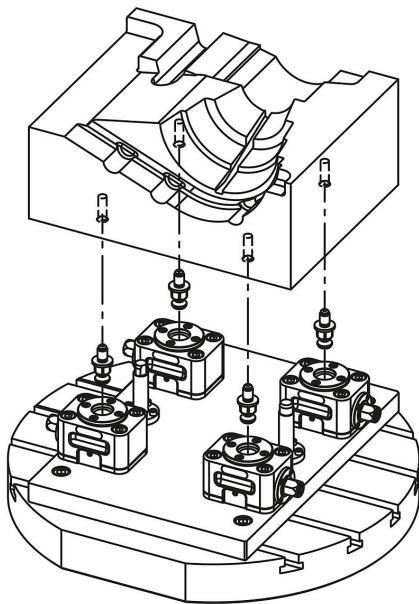


Pull clamps automation capable

Item description/product images



Description

Material:

Carbon steel.

Version:

Body black oxidised.

Contact face tempered and ground.

Note:

The repeat accuracy is ± 0.3 mm.

To remove swarf and dust, remove the two cover caps (2) and blow them out with compressed air from above.

With automated operation, e.g. using impact drivers with adjustable torque, no more than 50% of the specified maximum tightening torque or clamping force may be used for loosening and tightening.

Type of operation:

Actuated using an impact driver with adjustable torque or manually using a clamping key.

With automated operation, e.g. using impact drivers with adjustable torque, no more than 50% of the specified maximum tightening torque or clamping force may be used for loosening and tightening.

Advantages:

Automation-compatible
High clamping forces
Rapid clamping

Supplied with:

Including positioning bush.

Accessory:

K2210 Clamping screw for automation capable pull clamps
K2212 Extension unit.

Drawing reference:

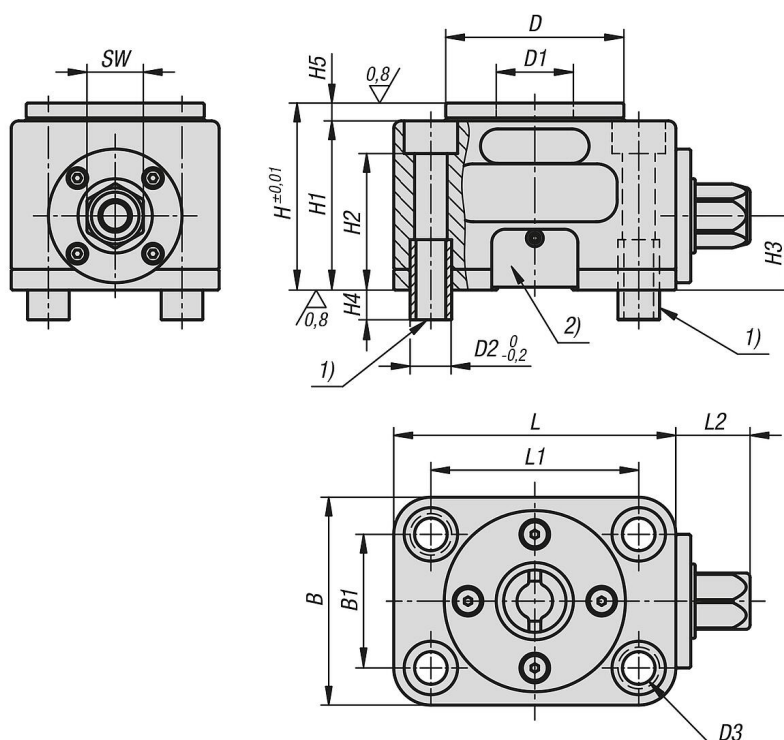
1) Positioning bushes
2) cover cap

Pull clamps automation capable

Item description/product images



Drawings



Overview of items

Pull clamps, automation capable

Order No.	B	B1	D	D1	D2	D3 for screw to DIN 912	H	H1	H2	H3	H4	H5	L	L1	L2	SW	Tightening torque max. Nm	Clamping force kN
K2209.12070095	70	45	60	26	14	M10	63	57	46	25	10	6	95	70	25	19	40	12

Pull clamps automation capable

Overview of items
