

Elevating castors with foot with bolt hole or mounting plate

Item description/product images



Description

Material:

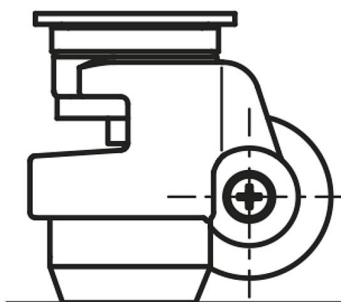
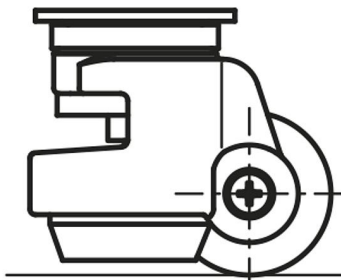
Housing die-cast aluminium.
Roller break resistant polyamide 6, Shore 70D.
Foot hard rubber.

Version:

Housing, powder-coated, ivory.
Steel parts trivalent blue passivated.
Roller and foot black.

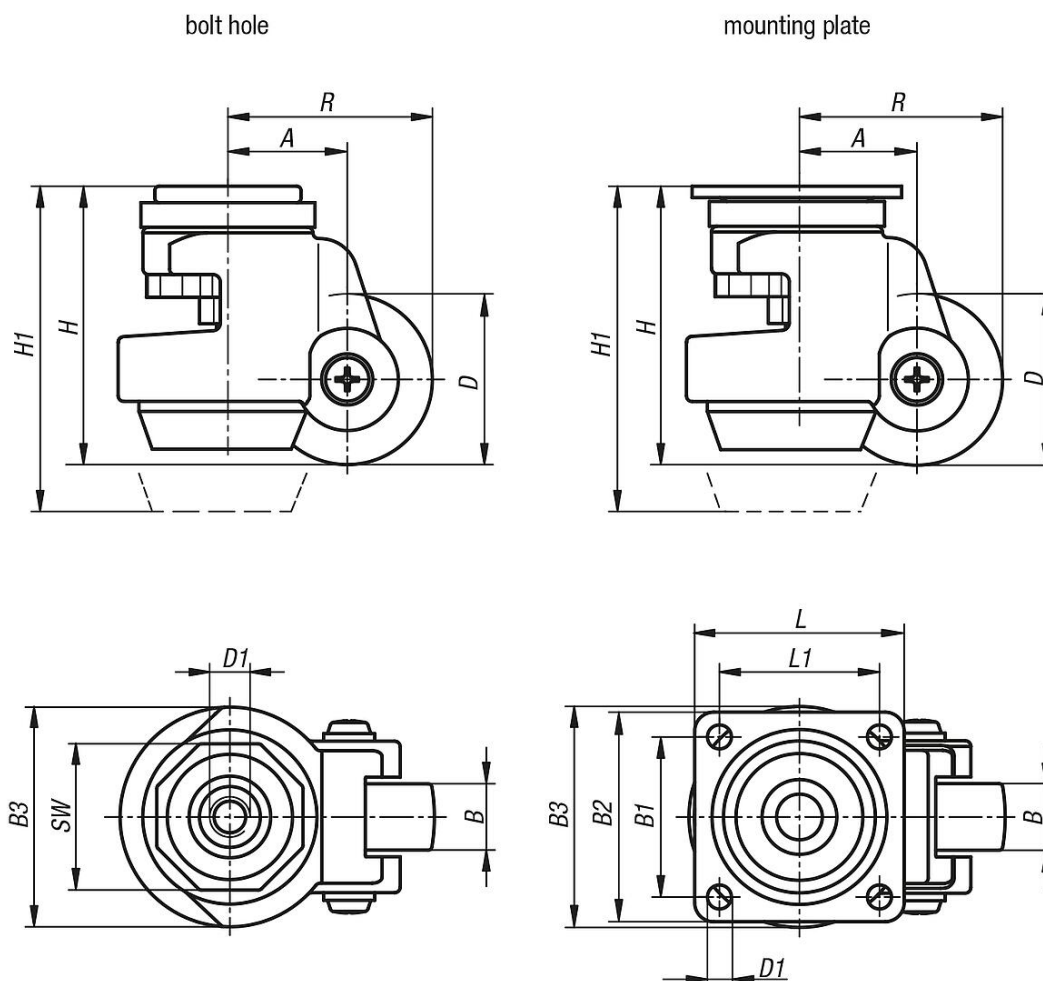
Note:

Elevating castor with foot. With sealed ball bearing in the swivel head. Height adjustment with a 13 mm spanner or by the integrated adjustment screw. Wheel axle bolted.



Elevating castors with foot with bolt hole or mounting plate

Drawings



Overview of items

Elevating castors with foot with bolt hole or mounting plate

| Order No. | Version 1 | Wheel bearing | Kind of fastening | D | D1 | A | B | B1 | B3 | H | H1 | L | L1 | R | SW | Permissible load kg |
|--------------|---------------------|---------------|-------------------|----|--------|----|----|----|----|-----|-----|----|----|------|----|---------------------|
| K1786.045180 | with locking system | plain bearing | bolt hole | 45 | M8x12 | 32 | 18 | - | 58 | 72 | 82 | - | - | 54,5 | 40 | 180 |
| K1786.050220 | with locking system | plain bearing | bolt hole | 50 | M12x15 | 38 | 22 | - | 72 | 84 | 94 | - | - | 63 | 46 | 250 |
| K1786.063290 | with locking system | plain bearing | bolt hole | 63 | M12x15 | 46 | 29 | - | 85 | 104 | 119 | - | - | 77,5 | 65 | 500 |
| K1786.045181 | with locking system | plain bearing | mounting plate | 45 | 7 | 32 | 18 | 42 | 58 | 72 | 82 | 55 | 42 | 54,5 | - | 180 |
| K1786.050221 | with locking system | plain bearing | mounting plate | 50 | 7 | 38 | 22 | 58 | 72 | 84 | 94 | 73 | 58 | 63 | - | 250 |
| K1786.063291 | with locking system | plain bearing | mounting plate | 63 | 9 | 46 | 29 | 70 | 85 | 104 | 119 | 90 | 70 | 77,5 | - | 500 |