

Tooling blocks, grey cast iron with grid holes

Item description/product images



Description

Material:
GJL 300.

Version:
Support and mounting surfaces ground

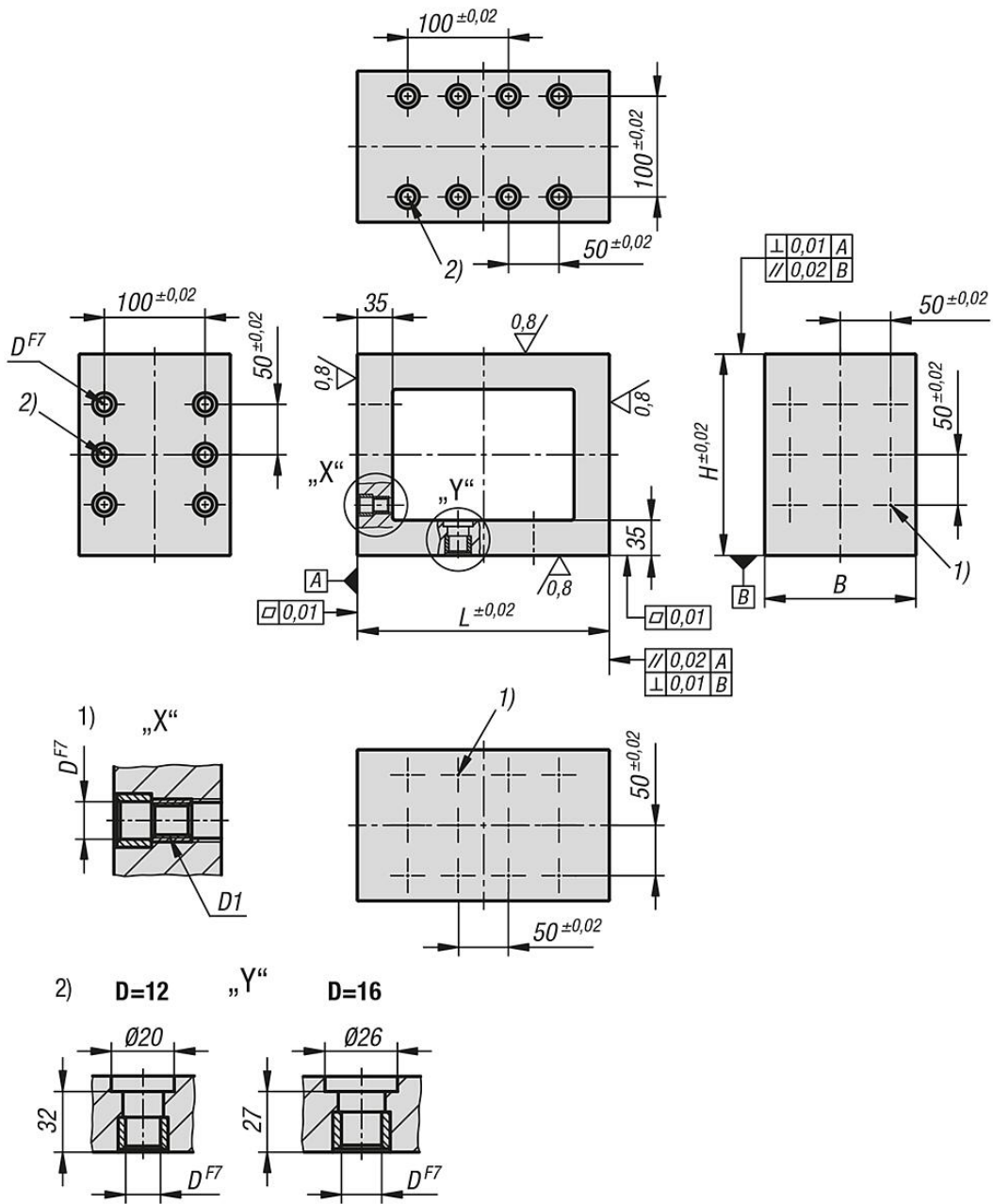
Note:
Grid spacing 50 ± 0.02 mm.
Tooling blocks with grid holes are used for constructing modular fixtures. They can be positioned and mounted precisely on grid systems. This means that the grid hole spacing is maintained on the raised clamping face.
Tooling blocks can also be used as a base element for clamping smaller workpieces. Size M12 tooling blocks are fastened using shoulder screws K0815.112065. Size M16 tooling blocks are fastened using shoulder screws K0815.116065.
Please order protection plugs to plug unused grid holes separately.

Drawing reference:

- 1) grid hole
- 2) hole for shoulder screw

Tooling blocks, grey cast iron with grid holes

Drawings



Overview of items

Tooling blocks, grey cast iron with grid holes

Order No.	L	B	H	D	D1	N1=No. of grid holes	No. of fastening holes
K0809.212201515	200	150	150	12	M12	15	10
K0809.2122515201	250	150	200	12	M12	21	14
K0809.212251520	250	150	200	12	M12	21	14
K0809.216201515	200	150	150	16	M16	15	10
K0809.2162515201	250	150	200	16	M16	21	14

