

Pins with circlip groove suitable for clevis

Item description/product images



Description

Material:

Steel or stainless steel 1.4301.

Version:

Electro zinc-plated steel.

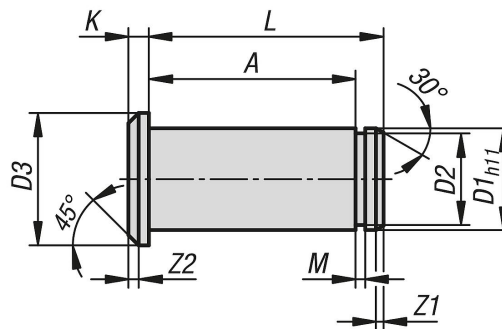
Bright stainless steel.

Note:

Pins with groove suitable for DIN 71752 clevis. Secured with a DIN 471 circlip.

When combined with a suitable clevis and tang, forms a fully functional clevis joint.

Drawings



Overview of items

Pins with circlip groove suitable for clevis

| Order No. | Main material | D1 | D2 | D3 | A | K | L | M | Z1 | Z2 |
|--------------|-----------------|----|------|----|------|-----|------|-----|------|-----|
| K1455.004085 | steel | 4 | 3,8 | 6 | 8,5 | 1 | 10 | 0,5 | 0,5 | 0,5 |
| K1455.005105 | steel | 5 | 4,8 | 8 | 10,5 | 1,5 | 12,5 | 0,7 | 0,5 | 0,5 |
| K1455.006125 | steel | 6 | 5,7 | 9 | 12,5 | 1,5 | 15,5 | 0,8 | 0,75 | 0,5 |
| K1455.008165 | steel | 8 | 7,6 | 12 | 16,5 | 2 | 20,5 | 0,9 | 1 | 1 |
| K1455.010205 | steel | 10 | 9,6 | 14 | 20,5 | 2 | 24 | 1,1 | 1 | 1 |
| K1455.012245 | steel | 12 | 11,5 | 17 | 24,5 | 3 | 28 | 1,1 | 1,25 | 1,5 |
| K1455.014275 | steel | 14 | 13,4 | 19 | 27,5 | 3 | 32 | 1,1 | 1,25 | 1,5 |
| K1455.016325 | steel | 16 | 15,2 | 21 | 32,5 | 3 | 37 | 1,1 | 1,5 | 1,5 |
| K1455.020405 | steel | 20 | 19 | 26 | 40,5 | 4 | 46 | 1,3 | 1,5 | 2 |
| K1455.104085 | stainless steel | 4 | 3,8 | 6 | 8,5 | 1 | 10 | 0,5 | 0,5 | 0,5 |
| K1455.105105 | stainless steel | 5 | 4,8 | 8 | 10,5 | 1,5 | 12,5 | 0,7 | 0,5 | 0,5 |
| K1455.106125 | stainless steel | 6 | 5,7 | 9 | 12,5 | 1,5 | 15,5 | 0,8 | 0,75 | 0,5 |
| K1455.108165 | stainless steel | 8 | 7,6 | 12 | 16,5 | 2 | 20,5 | 0,9 | 1 | 1 |
| K1455.110205 | stainless steel | 10 | 9,6 | 14 | 20,5 | 2 | 24 | 1,1 | 1 | 1 |
| K1455.112245 | stainless steel | 12 | 11,5 | 17 | 24,5 | 3 | 28 | 1,1 | 1,25 | 1,5 |
| K1455.116325 | stainless steel | 16 | 15,2 | 21 | 32,5 | 3 | 37 | 1,1 | 1,5 | 1,5 |
| K1455.120405 | stainless steel | 20 | 19 | 26 | 40,5 | 4 | 46 | 1,3 | 1,5 | 2 |

