

## Adapter plate round

### Item description/product images



### Description

**Material:**

Steel.

**Version:**

Electro zinc-plated and trivalent blue passivated.

**Note:**

Adapter plates can be used in combination with toggle clamps. They enable toggle clamps to be positioned flexibly.

The adapter plates are clamped to the machine table using eccentric clamp modules.

**Advantages:**

Flexible movement and positioning.

Flexible height construction using the adapter block.

Easy assembly through the opening.

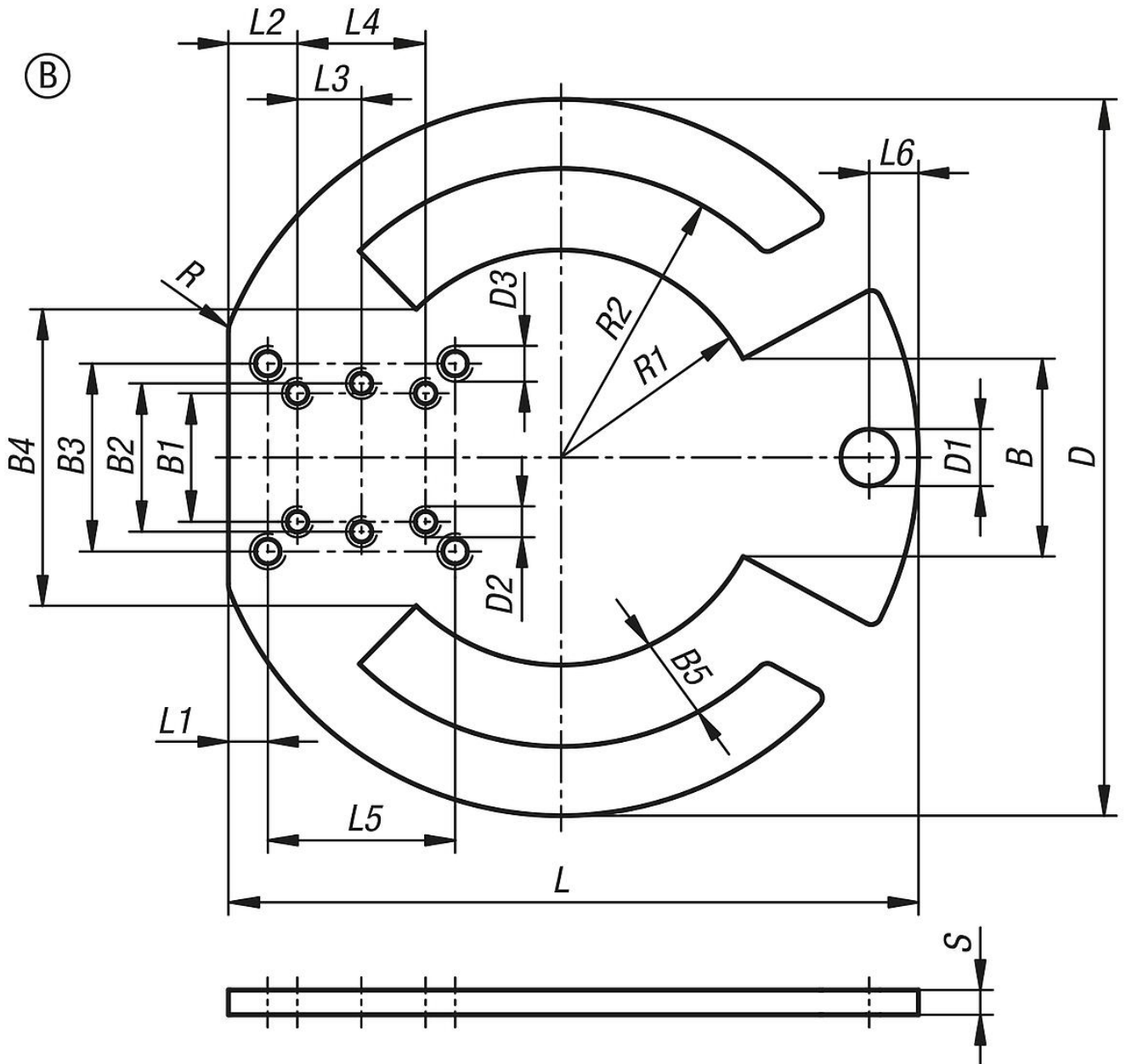
**Accessory:**

Eccentric clamp modules K0754

Toggle clamp K....

Adapter plate round

Drawings



Overview of items

Adapter plate, round

Order No.	Version 2	B	B1	B2	B3	B4	B5	D	D1	D2	D3	L	L1	L2	L3	L4	L5	L6	R	R1	R2	S
K1211.1145	open	40	30	30	38	60	16,5	145	11,5	M5	M6	140	8	14	13	26	38	10	5	42	58,5	5