

Tubular bubble levels with frame to screw on, Form A, one sight glass

Item description/product images



Description

Material:

Frame brass.
Tubular bubble vial glass.

Version:

Nickel-plated and high-gloss polished.

Note:

Bubble levels are used as a type of zero indicator instrument for checking horizontal inclination in e.g. spirit levels, inclinometers, metrology instruments and machine constructions.

The tubular levels can be fastened using the two holes.

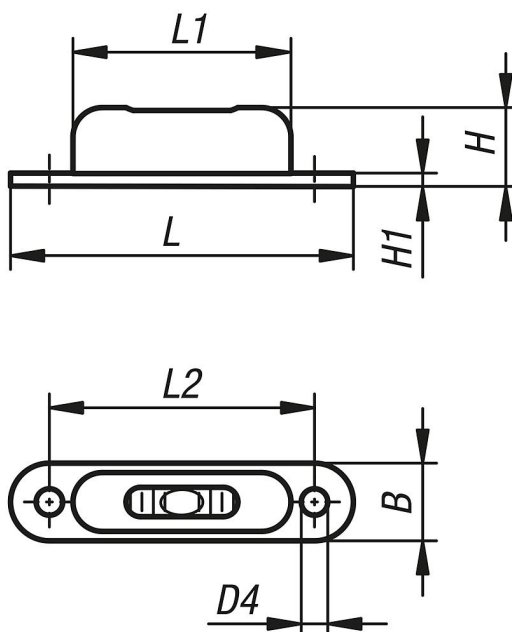
- Form A: one sight window
- Form B: three sight windows
- Sensitivity in angular minutes for 2 mm bubble travel
- Green filling

Temperature range:

-35 °C up to +55 °C.

Drawings

Ⓐ



Overview of items

Order No.	Form	B	D4	H	H1	L	L1	L2	Sensitivity
K1158.1571350	A	12,3	4,5	13	1	57	37	45	50'

Tubular bubble levels with frame to screw on, Form A, one sight glass

Overview of items
