

# Self-aligning pads, external thread, with O-ring, Form K, flattened POM ball smooth

Item description/product images



## Description

### Material:

Body carbon steel.  
Ball Form K POM.

### Version:

Body tempered.  
POM ball white.

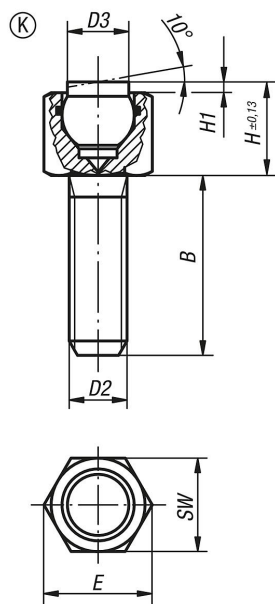
### Note:

Self-aligning pads are used to support and clamp unmachined and machined workpieces.  
They can also be used as stops, supports and thrust pads in fixtures and toolmaking.  
Ball secured against rotation.

### Advantages:

The built-in O-ring holds the ball in place and keeps dirt and foreign particles out, ensuring uniform movement.

## Drawings



## Overview of items

Order No.	Form	B	D2	D3	H	H1	E	SW	Ball-Ø	Load rating max. kN (static load only)
K0288.706X012	K	12	M6	6	9,5	1,5	11,5	10	7	2
K0288.706X025	K	25	M6	6	9,5	1,5	11,5	10	7	2
K0288.706X040	K	40	M6	6	9,5	1,5	11,5	10	7	2
K0288.708X012	K	12	M8	8,5	13	1,5	15	13	10	4

## Self-aligning pads, external thread, with O-ring, Form K, flattened POM ball smooth

### Overview of items

Order No.	Form	B	D2	D3	H	H1	E	SW	Ball-Ø	Load rating max. kN (static load only)
K0288.708X025	K	25	M8	8,5	13	1,5	15	13	10	4
K0288.708X040	K	40	M8	8,5	13	1,5	15	13	10	4