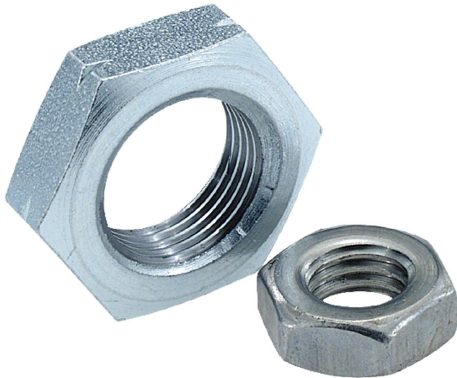


Hexagon nuts thin DIN 439 / ISO 4035

Item description/product images



Description

Material:

Steel, stainless steel A2 or stainless steel A4.

Version:

Steel grade 04, electro zinc-plated or black oxidised.

Stainless steel A2, bright.

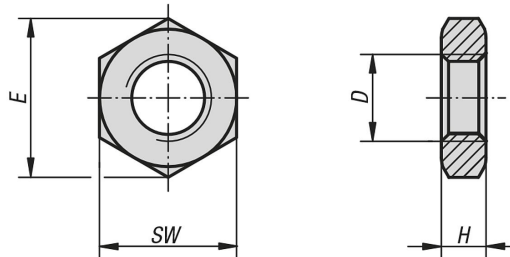
Stainless steel A4, bright.

Note:

These hexagon nuts are used in screw connections exposed to limited loads, e.g. as a locknut for clevis joints or rod ends.

The maximum nut height H max. is shown in the table.

Drawings



Overview of items

Hexagon nuts thin DIN 439 / ISO 4035

| Order No. | Main material | Surface finish body | Version 2 | D | E | H | SW | DIN | ISO |
|------------|---------------|---------------------|-----------|----------|-------|-----|----|---------|----------|
| K0700.006 | steel | galvanised | RH thread | M6X0,75 | 11,05 | 3,2 | 10 | DIN 439 | - |
| K0700.008 | steel | galvanised | RH thread | M8X1 | 14,38 | 4 | 13 | DIN 439 | - |
| K0700.05 | steel | galvanised | RH thread | M5 | 8,79 | 2,7 | 8 | DIN 439 | ISO 4035 |
| K0700.06 | steel | galvanised | RH thread | M6 | 11,05 | 3,2 | 10 | DIN 439 | ISO 4035 |
| K0700.061 | steel | galvanised | LH thread | M6 | 11,05 | 3,2 | 10 | DIN 439 | ISO 4035 |
| K0700.08 | steel | galvanised | RH thread | M8 | 14,38 | 4 | 13 | DIN 439 | ISO 4035 |
| K0700.081 | steel | galvanised | LH thread | M8 | 14,38 | 4 | 13 | DIN 439 | ISO 4035 |
| K0700.10 | steel | galvanised | RH thread | M10 | 18,9 | 5 | 17 | DIN 439 | - |
| K0700.101 | steel | galvanised | LH thread | M10 | 18,9 | 5 | 17 | DIN 439 | - |
| K0700.103 | steel | galvanised | RH thread | M10X1 | 18,9 | 5 | 17 | DIN 439 | - |
| K0700.1031 | steel | galvanised | LH thread | M10X1 | 18,9 | 5 | 17 | DIN 439 | - |
| K0700.104 | steel | galvanised | RH thread | M10X1,25 | 18,9 | 5 | 17 | DIN 439 | - |
| K0700.1041 | steel | galvanised | LH thread | M10X1,25 | 18,9 | 5 | 17 | DIN 439 | - |
| K0700.12 | steel | galvanised | RH thread | M12 | 21,1 | 6 | 19 | DIN 439 | - |
| K0700.121 | steel | galvanised | LH thread | M12 | 21,1 | 6 | 19 | DIN 439 | - |
| K0700.123 | steel | galvanised | RH thread | M12X1,25 | 21,1 | 6 | 19 | DIN 439 | - |
| K0700.1231 | steel | galvanised | LH thread | M12X1,25 | 21,1 | 6 | 19 | DIN 439 | - |
| K0700.124 | steel | galvanised | RH thread | M12X1,5 | 21,1 | 6 | 19 | DIN 439 | - |
| K0700.1241 | steel | galvanised | LH thread | M12X1,5 | 21,1 | 6 | 19 | DIN 439 | - |
| K0700.16 | steel | galvanised | RH thread | M16 | 26,76 | 8 | 24 | DIN 439 | ISO 4035 |
| K0700.161 | steel | galvanised | LH thread | M16 | 26,76 | 8 | 24 | DIN 439 | ISO 4035 |
| K0700.163 | steel | galvanised | RH thread | M16x1,5 | 26,76 | 8 | 24 | DIN 439 | - |
| K0700.183 | steel | galvanised | RH thread | M18x1,5 | 29,56 | 9 | 27 | DIN 439 | - |
| K0700.203 | steel | galvanised | RH thread | M20X1,5 | 32,95 | 10 | 30 | DIN 439 | - |
| K0700.2031 | steel | galvanised | LH thread | M20X1,5 | 32,95 | 10 | 30 | DIN 439 | - |

Hexagon nuts thin DIN 439 / ISO 4035

Overview of items

| Order No. | Main material | Surface finish body | Version 2 | D | E | H | SW | DIN | ISO |
|-------------|--------------------|---------------------|-----------|----------|-------|-----|----|---------|----------|
| K0700.223 | steel | galvanised | RH thread | M22x1,5 | 36,9 | 10 | 32 | DIN 439 | - |
| K0700.2231 | steel | galvanised | LH thread | M22x1,5 | 36,9 | 10 | 32 | DIN 439 | - |
| K0700.14 | steel | galvanised | RH thread | M14 | 24,49 | 7 | 22 | DIN 439 | - |
| K0700.20 | steel | galvanised | RH thread | M20 | 32,95 | 10 | 30 | DIN 439 | ISO 4035 |
| K0700.24 | steel | galvanised | RH thread | M24 | 39,55 | 12 | 36 | DIN 439 | ISO 4035 |
| K0700.30 | steel | galvanised | RH thread | M30 | 50,85 | 15 | 46 | DIN 439 | ISO 4035 |
| K0700.205 | steel | black oxidised | RH thread | M5 | 8,79 | 2,7 | 8 | DIN 439 | ISO 4035 |
| K0700.206 | steel | black oxidised | RH thread | M6 | 11,05 | 3,2 | 10 | DIN 439 | ISO 4035 |
| K0700.2063 | steel | black oxidised | RH thread | M6X0,75 | 11,05 | 3,2 | 10 | DIN 439 | - |
| K0700.208 | steel | black oxidised | RH thread | M8 | 14,38 | 4 | 13 | DIN 439 | ISO 4035 |
| K0700.2083 | steel | black oxidised | RH thread | M8X1 | 14,38 | 4 | 13 | DIN 439 | - |
| K0700.210 | steel | black oxidised | RH thread | M10 | 18,9 | 5 | 17 | DIN 439 | - |
| K0700.2103 | steel | black oxidised | RH thread | M10X1 | 18,9 | 5 | 17 | DIN 439 | - |
| K0700.212 | steel | black oxidised | RH thread | M12 | 21,1 | 6 | 19 | DIN 439 | - |
| K0700.2124 | steel | black oxidised | RH thread | M12X1,5 | 21,1 | 6 | 19 | DIN 439 | - |
| K0700.216 | steel | black oxidised | RH thread | M16 | 26,76 | 8 | 24 | DIN 439 | ISO 4035 |
| K0700.2163 | steel | black oxidised | RH thread | M16x1,5 | 26,76 | 8 | 24 | DIN 439 | - |
| K0700.2203 | steel | black oxidised | RH thread | M20X1,5 | 32,95 | 10 | 30 | DIN 439 | - |
| K0700.2243 | steel | black oxidised | RH thread | M24x2 | 39,6 | 12 | 36 | DIN 439 | - |
| K0700.105 | stainless steel A2 | bright | RH thread | M5 | 8,79 | 2,7 | 8 | DIN 439 | ISO 4035 |
| K0700.106 | stainless steel A2 | bright | RH thread | M6 | 11,05 | 3,2 | 10 | DIN 439 | ISO 4035 |
| K0700.1061 | stainless steel A2 | bright | LH thread | M6 | 11,05 | 3,2 | 10 | DIN 439 | ISO 4035 |
| K0700.1062 | stainless steel A2 | bright | RH thread | M6X0,75 | 11,05 | 3,2 | 10 | DIN 439 | - |
| K0700.108 | stainless steel A2 | bright | RH thread | M8 | 14,38 | 4 | 13 | DIN 439 | ISO 4035 |
| K0700.1081 | stainless steel A2 | bright | LH thread | M8 | 14,38 | 4 | 13 | DIN 439 | ISO 4035 |
| K0700.1083 | stainless steel A2 | bright | RH thread | M8X1 | 14,38 | 4 | 13 | DIN 439 | - |
| K0700.110 | stainless steel A2 | bright | RH thread | M10 | 18,9 | 5 | 17 | DIN 439 | - |
| K0700.1101 | stainless steel A2 | bright | LH thread | M10 | 18,9 | 5 | 17 | DIN 439 | - |
| K0700.1103 | stainless steel A2 | bright | RH thread | M10X1 | 18,9 | 5 | 17 | DIN 439 | - |
| K0700.11031 | stainless steel A2 | bright | LH thread | M10X1 | 18,9 | 5 | 17 | DIN 439 | - |
| K0700.1104 | stainless steel A2 | bright | RH thread | M10X1,25 | 18,9 | 5 | 17 | DIN 439 | - |
| K0700.11041 | stainless steel A2 | bright | LH thread | M10X1,25 | 18,9 | 5 | 17 | DIN 439 | - |
| K0700.112 | stainless steel A2 | bright | RH thread | M12 | 21,1 | 6 | 19 | DIN 439 | - |
| K0700.1121 | stainless steel A2 | bright | LH thread | M12 | 21,1 | 6 | 19 | DIN 439 | - |
| K0700.1123 | stainless steel A2 | bright | RH thread | M12X1,25 | 21,1 | 6 | 19 | DIN 439 | - |
| K0700.11231 | stainless steel A2 | bright | LH thread | M12X1,25 | 21,1 | 6 | 19 | DIN 439 | - |
| K0700.1124 | stainless steel A2 | bright | RH thread | M12X1,5 | 21,1 | 6 | 19 | DIN 439 | - |
| K0700.11241 | stainless steel A2 | bright | LH thread | M12X1,5 | 21,1 | 6 | 19 | DIN 439 | - |
| K0700.116 | stainless steel A2 | bright | RH thread | M16 | 26,76 | 8 | 24 | DIN 439 | ISO 4035 |
| K0700.1161 | stainless steel A2 | bright | LH thread | M16 | 26,76 | 8 | 24 | DIN 439 | ISO 4035 |
| K0700.1163 | stainless steel A2 | bright | RH thread | M16x1,5 | 26,76 | 8 | 24 | DIN 439 | - |
| K0700.120 | stainless steel A2 | bright | RH thread | M20 | 32,95 | 10 | 30 | DIN 439 | ISO 4035 |
| K0700.1203 | stainless steel A2 | bright | RH thread | M20X1,5 | 32,95 | 10 | 30 | DIN 439 | - |
| K0700.12031 | stainless steel A2 | bright | LH thread | M20X1,5 | 32,95 | 10 | 30 | DIN 439 | - |
| K0700.1223 | stainless steel A2 | bright | RH thread | M22x1,5 | 36,9 | 10 | 32 | DIN 439 | - |
| K0700.12231 | stainless steel A2 | bright | LH thread | M22x1,5 | 36,9 | 10 | 32 | DIN 439 | - |
| K0700.1243 | stainless steel A2 | bright | RH thread | M24x2 | 39,6 | 12 | 36 | DIN 439 | - |
| K0700.114 | stainless steel A2 | bright | RH thread | M14 | 24,49 | 7 | 22 | DIN 439 | - |
| K0700.1244 | stainless steel A2 | bright | RH thread | M24 | 39,55 | 12 | 36 | DIN 439 | ISO 4035 |
| K0700.605 | stainless steel A4 | bright | RH thread | M5 | 8,79 | 2,7 | 8 | DIN 439 | ISO 4035 |
| K0700.606 | stainless steel A4 | bright | RH thread | M6 | 11,05 | 3,2 | 10 | DIN 439 | ISO 4035 |
| K0700.6062 | stainless steel A4 | bright | RH thread | M6X0,75 | 11,05 | 3,2 | 10 | DIN 439 | - |
| K0700.608 | stainless steel A4 | bright | RH thread | M8 | 14,38 | 4 | 13 | DIN 439 | ISO 4035 |
| K0700.6083 | stainless steel A4 | bright | RH thread | M8X1 | 14,38 | 4 | 13 | DIN 439 | - |
| K0700.610 | stainless steel A4 | bright | RH thread | M10 | 18,9 | 5 | 17 | DIN 439 | - |
| K0700.6103 | stainless steel A4 | bright | RH thread | M10X1 | 18,9 | 5 | 17 | DIN 439 | - |
| K0700.6104 | stainless steel A4 | bright | RH thread | M10X1,25 | 18,9 | 5 | 17 | DIN 439 | - |
| K0700.612 | stainless steel A4 | bright | RH thread | M12 | 21,1 | 6 | 19 | DIN 439 | - |
| K0700.6123 | stainless steel A4 | bright | RH thread | M12X1,25 | 21,1 | 6 | 19 | DIN 439 | - |
| K0700.6124 | stainless steel A4 | bright | RH thread | M12X1,5 | 21,1 | 6 | 19 | DIN 439 | - |
| K0700.614 | stainless steel A4 | bright | RH thread | M14 | 24,49 | 7 | 22 | DIN 439 | - |
| K0700.616 | stainless steel A4 | bright | RH thread | M16 | 26,76 | 8 | 24 | DIN 439 | ISO 4035 |

Hexagon nuts thin DIN 439 / ISO 4035

Overview of items

| Order No. | Main material | Surface finish body | Version 2 | D | E | H | SW | DIN | ISO |
|-------------------|--------------------|---------------------|-----------|---------|-------|----|----|---------|----------|
| K0700.6163 | stainless steel A4 | bright | RH thread | M16x1,5 | 26,76 | 8 | 24 | DIN 439 | - |
| K0700.620 | stainless steel A4 | bright | RH thread | M20 | 32,95 | 10 | 30 | DIN 439 | ISO 4035 |
| K0700.6203 | stainless steel A4 | bright | RH thread | M20x1,5 | 32,95 | 10 | 30 | DIN 439 | - |
| K0700.6223 | stainless steel A4 | bright | RH thread | M22x1,5 | 36,9 | 10 | 32 | DIN 439 | - |
| K0700.6244 | stainless steel A4 | bright | RH thread | M24 | 39,55 | 12 | 36 | DIN 439 | ISO 4035 |
| K0700.6243 | stainless steel A4 | bright | RH thread | M24x2 | 39,6 | 12 | 36 | DIN 439 | - |