



HEINRICH KIPP WERK

**NEW**

100% INNOVATION



# KIPP HANDLES

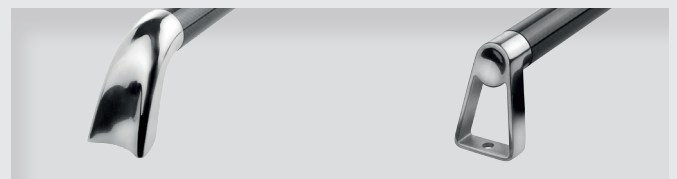
carbon | detachable | compact

## NEW TUBULAR HANDLES carbon

100% DESIGN



"TUBULAR HANDLES carbon" were developed for the premium sector. The exclusive appearance and high quality make them ideal for use in high-grade applications such as furnishings, visual constructions or interior fittings.



- + Genuine carbon
- + End cap polished stainless steel
- = Extreme durability

Profile A		Profile B	
Tube diameter Ø 25 mm	Ø 35 mm	Tube diameter Ø 25 mm	Ø 35 mm
250 mm	350 mm	250 mm	350 mm
300 mm	400 mm	300 mm	400 mm
350 mm	450 mm	350 mm	450 mm

## NEW PULL HANDLES detachable



100% FLEXIBLE

"PULL HANDLES detachable" are intended for the manual transport of mounting plates in fixture and machine construction. Transporting a zero point clamping system can be carried with these handles. The handles are simply detached after positioning. The pallet contour remains free of interferences.

Profile A Ø 14 M8	Profile B Ø 12 M6
112 mm	100 mm
120 mm	112 mm
128 mm	120 mm
160 mm	128 mm
180 mm	160 mm
192 mm	
350 mm	

- + Optimises processing times during set-ups
- + Simply attach + detach
- = Extremely practical

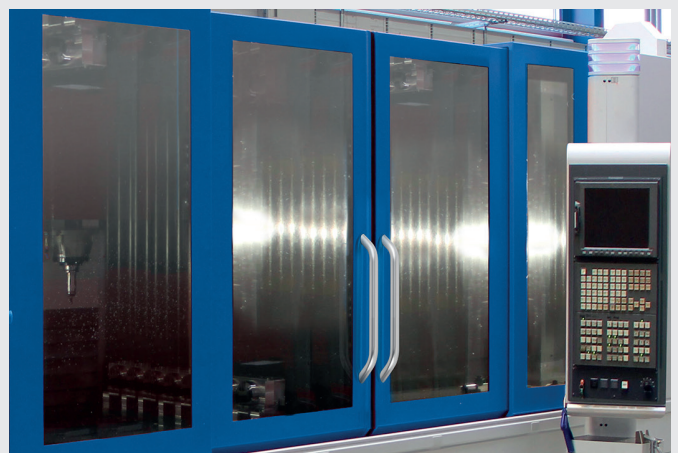


# TUBULAR HANDLEScompact **NEW**

"TUBULAR HANDLES compact" suit the design of your machine perfectly. They have a fluid and cohesive style. Where customary tubular handles are partly solid, these are a complete tube with a patented fastening system allowing them to be secured from the rear. This makes the KIPP handles light and robust.



100% INNOVATION



- + Ideal for machine doors
- + Aluminium
- = Extremely robust

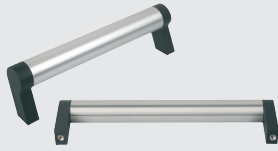
Round profile	Oval profile*
150 mm	250 mm
300 mm	300 mm
400 mm	400 mm
500 mm	500 mm

\*Available from 2016

# KIPP HANDLES

HEINRICH KIPP WERK offers a comprehensive assortment of different handles:

TYPES



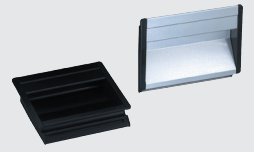
Tubular handles



Pull handles



Arch handles



Recessed handles

MATERIALS



Stainless steel



Aluminium



Thermoplastic



Duroplast

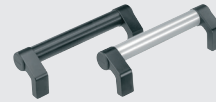
FORMS



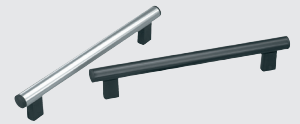
Round profile



Oval profile



Angular



Rod shaped

SURFACE FINISH



Powder coated



Chromed



Duel-component



Plastic



**HEINRICH KIPP WERK KG**  
 Heubergstraße 2  
 72172 Sulz am Neckar  
 GERMANY

Tel. +49 7454 793-0  
 Fax +49 7454 793-7982

info@kipp.com  
 www.kipp.com

## THE ENTIRE PROGRAM. REQUEST NOW.

Please send me free of charge:

- Catalogue KIPP Operating parts | Standard parts**  
18,000 products for every application
- Catalogue KIPP Workholding systems**  
Simple solutions for complex requirements
- KIPP CAD-library 2D/3D**  
Perfect design data for quick planning results

Name

Department

E-mail

Company

Street

Postcode / town or city

Telephone No.

Fax

Or simply request documentation from the internet under: [www.kipp.com](http://www.kipp.com)

WE01ENPR1504

By fax: +49 7454 793-7982